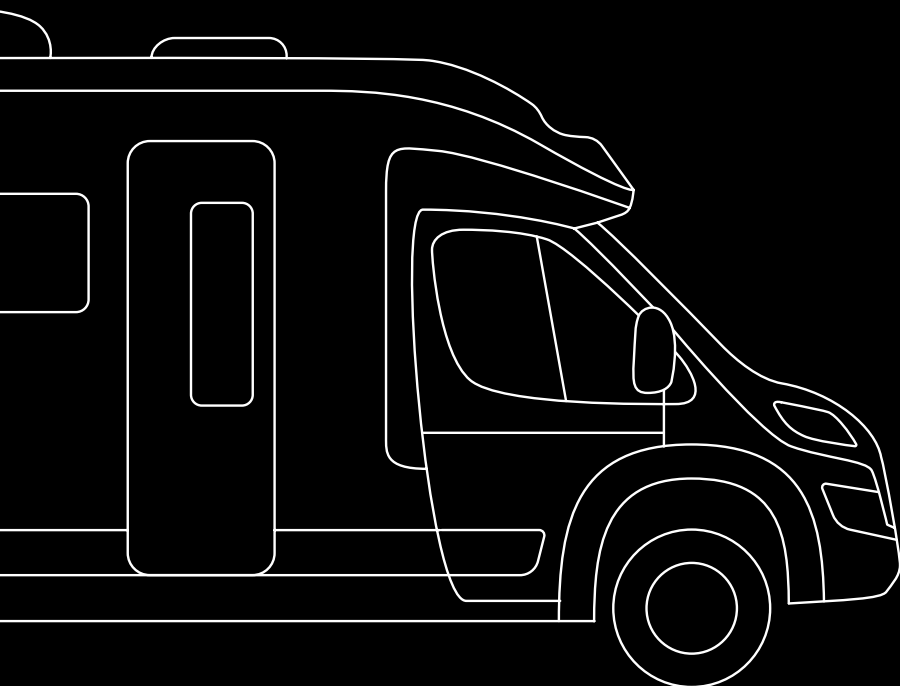


Motorhome Price List Technical Data

Valid starting from August 2021



LAIKA

The LAIKA logo features a stylized white bird or wing graphic above the brand name 'LAIKA' in a bold, sans-serif font.







KOSMO COMPACT

KOSMO COMPACT EQUIPMENT

CHASSIS

- Fiat Ducato, 120 BHP, Turbo Diesel Common Rail
- 16" steel wheel rims
- Fix & Go Tyre repair set
- 75 l diesel tank
- Electronic Stability Control: ESC, ABS, ASR, Hill Holder, Roll Over Mitigation, Crosswind Assist, Trailer Stability Control System, Post Collision Braking System
- Cruise control
- Eco-Pack with Start&Stop
- Manual air conditioning for cab
- Driver and passenger airbags
- Height adjustable steering wheel
- Electric windows in cab
- Bodywork and bumpers painted in same colour

CAB

- Central locking of cab doors with remote control
- Height adjustable swivel cab seats with two armrests

BODYWORK

- Insulation in polystyrene foam (EPS)
- Aerodynamic overcab and parts in the driver's cab and living area in ABS
- ABS side skirts
- Garage with low floor, non-slip coating, lighting, heating and rails with load hooks that can be repositioned
- Garage with maximum payload 150 kg depending on configuration and actual load in use
- Entrance with electrical step
- Courtesy handle in the entrance area
- Main door with fixed window and blind
- Windows with frame, flat window pane, blind and mosquito net
- External LED light

KITCHEN

- Scratch and fingerprint resistant kitchen and table tops
- Indirect lighting under kitchen top
- 3-burner stove and sink in stainless steel with folding tap
- Refrigerator with automatic energy source selection (AES)
- Automatic soft-close drawers
- 230 V outlet in kitchen

BATHROOM/SHOWER

- Removable toilet cassette (antifreeze)
- Roof-light in bathroom
- Vario-bathroom with integrated separable maxi shower
- 230 V outlet in bathroom

SYSTEMS

- 100% LED lighting over and under wall units
- Adjustable reading lights complete with USB sockets
- Heating with programmable digital control panel
- Control panel with LED display
- Automatic 18 A battery charger
- Living area battery (95 Ah)
- USB sockets for power supply and charging of mobile devices
- Gas compartment for two cylinders
- Internal water tank, easily accessible for cleaning and inspection, complete with electric immersion pump
- Waste water tank featuring safety open/close button

INTERIOR & COMFORT

- Furniture design "Pero Toscano"
- Anti-condensation walls and ventilation in the furniture for an ideal spread of the heat
- Lounge cushions with removable lining
- Height-adjustable living room headrests
- "Como" upholstery
- Extendable table
- Beds with wooden staves
- High comfort mattresses with machine washable stretch lining
- Padded and illuminated rear headboard
- Storage compartments inside the overcab
- Wardrobe cabinet with pull-out track

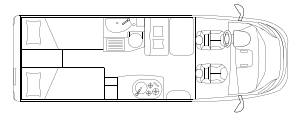
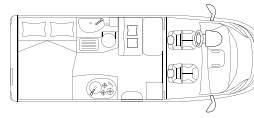
STANDARD SETTINGS FOR:

- TV preparation with power supply and aerial cable



KOSMO COMPACT

OVERVIEW OF ALL MODELS



MODELS

COMPACT 5

COMPACT 9

Standard chassis		Fiat Ducato 35 Light	Fiat Ducato 35 Light
Engine displacement / maximum power	cc / kW (hp)	2184 / 88 (120)	2184 / 88 (120)
External length / width / height ^D	cm	595 / 214 / 276	665 / 214 / 276
Internal width / height	cm	200 / 195	200 / 195
Wheelbase	mm	3.450	3.800
Mass in running order ^F	kg	2.565	2.633
Technically permissible maximum laden mass	kg	3.500 (S) 3.650 (O)	3.500 (S) 3.650 (O)
Technically permissible maximum towable mass ^E	kg	2.000	2.000
Type-approved seats / Berths ^A		4 (S) / 2 (S) + 1 (O)	4 (S) / 2 (S) + 1 (O)
Wall / roof / floor (thickness)	mm	34 / 33 / 42	34 / 33 / 42
Windows		3	4
40 x 40 cm roof-light in living area		S	S
70 x 50 cm panoramic roof-light in living area		P	P
40 x 40 cm roof-light in sleeping area		S	S
Garage dimensions (W x H x L)	cm	218x115x64 / 55	218x110x87
Right hatch / left hatch (W x H)	cm	65x110 / 45x85 (O)	70x105 / 70x75 (O)
Maximum fresh water tank capacity depending on configuration and actual load	l	90 + 20	90 + 20
Maximum waste water tank capacity depending on configuration and actual load	l	90	90
Swivel toilet with removable tank (antifreeze)	l	18	18
Rear right side bed / rear left side bed	cm	-	200x70 / 195x80
Double rear bed	cm	194x140/130	O
Dinette bed	cm	185x70/43 (O)	165x65 (O)
Refrigerator	l	89	89
Hot air channeled heating system	kW	4	4
12 V sockets - 230 V sockets - USB socket - TV sockets in living room - rear bedroom		1-2-(1+4) - 1-/	1-2-(1+4) - 1-/
Gas cylinder compartment	kg	2x11	2x11

OPTIONAL

Optional Chassis		Fiat Ducato 43 Heavy	Fiat Ducato 43 Heavy
Maximum power	kW (hp)	103 (140) 117 (160) 130 (180)	103 (140) 117 (160) 130 (180)
Mass in running order ^F	kg	2.605	2.673
Technically permissible maximum laden mass ^B	kg	4.250 (S) 4.400 (O)	4.250 (S) 4.400 (O)
Technically permissible maximum towable mass ^E	kg	2.000	2.000
Type-approved seats ^A		4 (S)	4 (S)

ND | To be defined

O | Option

S | Standard

P | Pack

KOSMO COMPACT PACKS

CHASSIS PACK

PGA
+ 6.4 KG

- Electric and heated door mirrors
- Steering wheel radio controls
- DAB radio antenna
- DAB car radio and speaker arrangement in cab
- Traction +, Hill Descent

SMART HOME PACK

SH4
+ 7 KG

- Gas detector
- Heated tank
- Gas regulator with automatic heat exchanger and anti-ice device
- Swivel TV holder

CHASSIS DESIGN PACK BASIC

PDN
+ 1 KG

- Glossy black engine grille
- Leather-covered steering wheel and gear knob, original Fiat
- Headlights with black design surround
- Dashboard in „Techno Trim“ version

COMFORT PACK KOSMO COMPACT

PS9
+ 24.5 KG

- Cab seat upholstery
- Reversing camera preparation
- Shower cabin with curtain
- Wooden footboard for shower tray
- Carpeted driver's cabin and living area entrance mat
- Mosquito net
- Insulated waste water tank
- 70x50 cm living room skylight

**DRIVING ASSISTANCE
SYSTEMS PACK** **2PP**
+ 0.2 KG

- Autonomous Emergency Brake Control with Pedestrian and Cyclist detection, Lane Control (Lane Support System), Rain and Dusk Sensor , Traffic Sign Recognition + High Beam Recognition

**MULTIMEDIA PACK
KOSMO** **MM3**
+ 7.8 KG

- Multimedia System 8", DAB car radio, Touchscreen, Navigation and map update 3 years, speakers, rear view camera

**ALARM
PACK** **S1A**
+ 4.2 KG

- Front parking sensors (4 pcs.)
- Rear parking sensors (4 pcs.)
- Volumetric-perimeter anti-theft device (incl. garage doors and hatches), remote control integrated in engine key
- Anti-theft sensors for windows (6 pieces)

KOSMO COMPACT ACCESSORIES

Code No.	Accessories	Price £ *	Kg	Compact 5	Compact 9
CHASSIS AND CAB					
2043605	Increased weight 3,650 kg, Fiat Light chassis	£ 250	0.0 kg	O	O
2734600	Fiat Ducato Heavy Chassis 4,250 kg (possible only with 140 BHP)	£ 1,300	40.0 kg	O	O
2734602	Fiat Heavy Chassis 4,400 kg (possible only with 160 BHP or 180 BHP)	£ 1,560	40.0 kg	O	O
3057312	Fiat 2,2 Engine, 140 BHP, Euro 6d Final (Extra charge compared to 120 BHP)	£ 820	0.0 kg	O	O
3056219	Fiat 2,2 Engine, 160 BHP, Euro 6d Final (Extra charge compared to 120 BHP)	£ 2,590	15.0 kg	O	O
3056223	Fiat 2,2 Engine, 180 BHP, Euro 6d Final (Extra charge compared to 120 BHP)	£ 4,490	15.0 kg	O	O
2JH-3	Automatic transmission for 140 BHP engine - Light chassis	£ 3,020	48.0 kg	O	O
2JH-4	Automatic transmission for 160 BHP and 180 BHP engine - Light chassis	£ 3,020	33.0 kg	O	O
AT9-HE140	140 BHP Automatic gearbox for Heavy Chassis	£ 3,020	18.0 kg	O	O
AT9H160180	160 BHP and 180BHP Automatic gearbox for Heavy Chassis	£ 3,020	3.0 kg	O	O
2PZ	U-Connect 10" Radio NAV Touch HD Display - Fiat original part	£ 1,750	1.9 kg	O	O
2QF	Full-Digital Cluster - Fiat Fiat original part	£ 480	0.3 kg	O	O
320	Steering wheel and gear lever in real leather, Fiat original part	£ 280	0.3 kg	O	O
5QD	Engine battery cut off switch, Fiat original part	£ 170	0.0 kg	O	O
3065127	Diesel tank 90 l, Fiat chassis	£ 90	12.0 kg	O	O
FO7	Laika logo stickers for Fiat wheel covers or alloy wheels (4 pieces)	£ 40	0.1 kg	O	O
431-2	16" Alloy wheels, Fiat original parts, 35 Light chassis (4 pieces)	£ 480	0.0 kg	O	O
0R2-2	16" Alloy wheels black matte, Fiat original parts, 35 Light chassis (4 pieces)	£ 590	0.0 kg	O	O
1LR	16" Alloy wheels Fiat original parts, Heavy chassis (4 pieces)	£ 480	0.0 kg	O	O
LPZ	Fog lights with cornering function, Fiat original part	£ 260	2.0 kg	O	O
9WE	Full LED headlights, Fiat original part	£ 1,590	0.0 kg	O	O
205	Programmable Diesel heating, Fiat original part	£ 1,060	6.0 kg	O	O
09U	Heated cab seats, Fiat original part (2 pieces - only in combination with Udine and Firenze upholstery)	£ 650	1.0 kg	O	O
67333	Automatic cab air conditioning, Fiat original part	£ 440	0.0 kg	O	O
RFX	Wireless charger for mobile phones - Fiat original part	£ 430	0.0 kg	O	O
365	TPMS tyre pressure checking system	£ 230	0.5 kg	O	O
2808053	Internal sliding blinds, for windshield and cab windows (they replace the standard separation curtain between cab/living area)	£ 610	4.5 kg	O	O
JKU	230 V socket in driver's cab, Fiat original part	£ 290	0.1 kg	O	O
3YL	Gloss black underride guard, Fiat original part	£ 90	0.0 kg	O	O

Code No. Accessories Price £ * Kg Compact 5 Compact 9

INTERIOR ACCESSORIES

FC5	Bed conversion from single beds to double bed (with ladder)	£ 310	12.0 kg	-	O
FF8	Bed conversion seating group (single bed) ⁽⁸⁾	£ 330	5.0 kg	O	-
C25	Bed conversion seating group (single bed)	£ 330	5.0 kg	-	O
TT6	Upholstery Verona	£ 430	0.0 kg	O	O
EE	Upholstery Firenze, leatherette	£ 620	0.0 kg	O	O
TT2	Upholstery Udine, leatherette	£ 620	0.0 kg	O	O
TT5	Upholstery Milano, real leather	£ 2.640	0.0 kg	O	O
3196530	19" TV LED DVD, with decoder and TV stand	£ 860	8.0 kg	O	O
FD1	Adjustable TV stand	£ 160	3.0 kg	O	O
FB3	Heating Combi 6 E	£ 500	3.0 kg	O	O
FD5	Underfloor heating (part of floor)	£ 540	9.0 kg	O	O
FF7	Combi 6 Heating	£ 260	0.0 kg	O	O
F58	Remote control of the heating via smartphone ⁽⁶⁾	£ 450	1.0 kg	O	O
FO	Gas oven with grill function	£ 620	17.0 kg	O	O
F27	Extractor fan ⁽⁷⁾	£ 440	2.0 kg	O	O
FR6	Inverter 350W	£ 230	1.7 kg	O	O
C30	Second living area battery AGM 95 Ah	£ 290	27.0 kg	O	O

INTERIOR ACCESSORIES

F29	External shower (cold water)	£ 200	2.5 kg	O	O
FG1/FG2	Garage door on left side	£ 380	3.0 kg	O	O
37831	Laika foldable bicycle carrier for 3 bikes	£ 370	9.3 kg	O	O
37832	Bicycle rail for 4th bicycle	£ 90	1.0 kg	O	O
C58	Awning (manual) 3,5 m, exterior paint white	£ 810	26.0 kg	O	-
D11	Awning (manual) 4 m, exterior paint white	£ 920	30.0 kg	-	O
AN3	Satellite aerial 80 HD	£ 2.180	17.0 kg	O	O
FL6	120 W Solar panel with control and fixing brackets	£ 770	15.5 kg	O	O
2447744	Parallel engine battery charging system (only in conjunction with solar panel)	£ 130	1.0 kg	O	O
D21	Provision for solar panel	£ 140	1.0 kg	O	O
F23	Stabilising jacks	£ 280	6.0 kg	O	O



KOSMO

KOSMO LOW-PROFILES | OVER-CAB | MOTORHOMES

COMMON STANDARD EQUIPMENT

CHASSIS

- Fiat Ducato, 120 BHP, Turbo Diesel Common Rail
- Enlarged rear track
- 16" steel wheel rims
- Fix & Go Tyre repair set
- 75 l diesel tank
- Electronic Stability Control: ESC, ABS, ASR, Hill Holder, Roll Over Mitigation, Crosswind Assist, Trailer Stability Control System, Post Collision Braking System
- Cruise control
- Eco-Pack with Start&Stop
- Manual air conditioning for cab
- Driver and passenger airbags
- Height adjustable steering wheel

CAB

- Central locking of cab and living area doors with remote control

BODYWORK

- Insulation in polystyrene foam (EPS)
- GRP sub-floor
- Aluminium side skirts
- Garage with low floor, non-slip coating, lighting, heating and rails with load hooks that can be repositioned
- Garage with maximum payload 150 kg depending on configuration and actual load in use
- Power socket in the garage
- Garage with double external access door
- Entrance with integrated step
- Courtesy handle in the entrance area
- Premium XL living space door with centralised closure, remote control, window, blind, storage compartment and mosquito net
- Windows with frame, flat window pane, blind and mosquito net
- External LED light

KITCHEN

- Scratch and fingerprint resistant kitchen and table tops
- Indirect lighting under kitchen top
- Stainless steel sink
- Multifunctional sink cover (chopping board and additional wall shelf)
- 3-burner stove
- Refrigerator with automatic energy source selection (AES)
- Automatic soft-close drawers
- 230 V outlet in kitchen
- Chrome metal spice rack shelf
- Kitchen and living room window frame covering
- Glass protection panels for kitchen walls
- 40 x 40 cm roof-light in kitchen

BATHROOM/SHOWER

- Removable toilet cassette (antifreeze)
- Roof-light in bathroom
- Separate shower
- 230 V outlet in bathroom

SYSTEMS

- 100% LED lighting over and under wall units
- Adjustable reading lights complete with USB sockets
- Gas combi heating with heat distribution throughout the interior, including rear garage and driver's cabin
- Heating with programmable digital control panel
- Control panel with LED display
- Automatic 18 A battery charger
- Living area battery (95 Ah)
- USB sockets for power supply and charging of mobile devices
- Gas compartment for two cylinders
- Internal water tank, easily accessible for cleaning and inspection, complete with electric immersion pump
- Waste water tank featuring safety open/close button
- Exhaust pipes with anti-odour siphons, recovery tank complete with external vent

INTERIOR & COMFORT

- Furniture design "Pero Toscano"
- Anti-condensation walls and ventilation in the furniture for an ideal spread of the heat
- Lounge cushions with removable lining
- Height-adjustable living room headrests
- "Como" upholstery
- Maxi panoramic roof-light above the lounge
- Beds with wooden staves
- High comfort mattresses with machine washable stretch lining
- Padded and illuminated rear headboard
- Wardrobes with integrated lighting, to be switched on independently

STANDARD SETTINGS FOR:

- Preparation for rear camera
- Set-up for coupling
- Set-up for satellite aerial

KOSMO LOW-PROFILES | OVER-CAB | MOTORHOMES

ADDITIONAL EQUIPMENT FOR EACH RANGE

LOW-PROFILES



- Electric windows in cab
- Bodywork and bumpers painted in same colour
- Height-adjustable swivel cab seats with armrests, backrests and fabrics matched to the living area
- Storage compartments and indirect lighting inside front cab
- Cab with integrated Skyview
- Vario-bathroom with integrated separable maxi shower
- Bathroom door also to be used as a separation for the centre of the vehicle (depending on model)
- Sliding rear doors (depending on model)
- Floor storage compartment in the rear area
- Ergonomic table with moving top and easy handling.
- Manually height adjustable rear centre bed
- TV compartment in living room for LCD/LED screens up to 32"
- Shoe compartment in the entrance area
- TV preparation with power supply and aerial cable

OVER-CAB



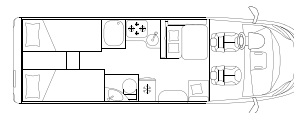
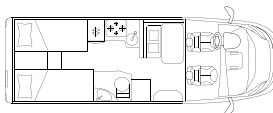
- Electric windows in cab
- Bodywork and bumpers painted in same colour
- Height-adjustable cab seats with two armrests and fabrics matched to the living area
- Alcove with two windows and a skylight
- Additional folding kitchen worktop
- Overcab bed with wooden slats and liftable top
- TV outlets above fridge

MOTORHOMES



- Descending rear-view mirrors, granturismo bus type, complete with double lens with wide angle function, heating and electrical adjustment, radio antenna integrated
- LED DRL (daytime running lights)
- Driver's door with electric windows
- Height-adjustable swivel cab seats with armrests, integrated seat belts and fabrics matched to the living area
- Pleated cab blinds
- One-piece GRP front with panoramic windshield
- Bathroom door also to be used as a separation for the centre of the vehicle (depending on model)
- Sliding rear doors (depending on model)
- Floor storage compartment in the rear area
- Ergonomic table with moving top and easy handling.
- Drop-down bed with slats and high comfort mattress, courtesy awning, rooflight with transparent dome, double reading lights, shelf and separation curtain for maximum privacy
- Area under drop-down bed with indirect light and reading lights
- Manually height adjustable rear centre bed
- TV compartment in living room for LCD/LED screens up to 32"
- Shoe compartment in the entrance area
- TV preparation with power supply and aerial cable

KOSMO LOW-PROFILES OVERVIEW OF ALL MODELS



MODELS

209

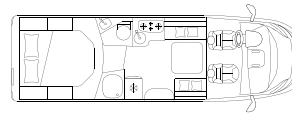
509

Standard chassis		Fiat Ducato 35 Light	Fiat Ducato 35 Light
Engine displacement / maximum power	cc / kW (hp)	2184 / 88 (120)	2184 / 88 (120)
External length / width / height ^D	cm	695 / 233 / 294	741 / 233 / 294
Internal width / height	cm	218 / 213	218 / 213
Wheelbase	mm	3.800	4.035
Mass in running order ^F	kg	2.869	2.960
Technically permissible maximum laden mass	kg	3.500 (S) 3.650 (O)	3.500 (S) 3.650 (O)
Technically permissible maximum towable mass ^E	kg	2.000	2.000
Type-approved seats / Berths ^A		4 (S) / 2 (S) + 2 (O)	4 (S) / 2 (S) + 2 (O) + 1 (O)
Wall / roof / floor (thickness)	mm	34 / 33 / 49	34 / 33 / 49
Windows		4 (S) + 1 (O)	4 (S) + 1 (O)
70 x 50 cm panoramic roof-light in living area ^L		S	S
40 x 40 cm roof-light in sleeping area		S	S
Garage dimensions (W x H x L)	cm	218x120x91	218x121x109
Right hatch / left hatch (W x H)	cm	75x115 / 75x115	93x115 / 93x115
Maximum fresh water tank capacity depending on configuration and actual load	l	90 + 20	90 + 20
Maximum waste water tank capacity depending on configuration and actual load	l	90	90
Swivel toilet with removable tank (antifreeze)	l	18	18
Face-to-face living room with folding extendable table		-	-
Rear right side bed / rear left side bed	cm	201x80 / 186x80	207x80 / 200x80
Double rear bed	cm	(O)	(O)
Manually height-adjustable double rear bed	cm	-	-
Dinette bed	cm	-	200x115 (O)
Electric-powered drop-down bed ^{opt I}	cm	200x140	200x140
Refrigerator	l	140	140
Hot air channeled heating system	kW	6	6
Water heating system and heat exchanger in motion	kW	(O) 6	(O) 6
12 V sockets - 230 V sockets - USB socket - TV sockets in living room - rear bedroom		2-5-(1+2) - 1- /	2-6-(1+2) - 1- /
Gas cylinder compartment	kg	2x11	2x11

OPTIONAL

Optional Chassis		Fiat Ducato 43 Heavy	Fiat Ducato 43 Heavy
Maximum power	kW (hp)	103 (140) 117 (160) 130 (180)	103 (140) 117 (160) 130 (180)
Mass in running order ^F	kg	2.909	3.000
Technically permissible maximum laden mass ^B	kg	4.250 (S) 4.400 (O)	4.250 (S) 4.400 (O)
Technically permissible maximum towable mass ^E	kg	2.000	2.000
Type-approved seats ^A		4 (S)	4 (S) 5 (O)

KOSMO LOW-PROFILES OVERVIEW OF ALL MODELS



MODELS

509L

512

Standard chassis		Fiat Ducato 35 Light	Fiat Ducato 35 Light
Engine displacement / maximum power	cc / kW (hp)	2184 / 88 (120)	2184 / 88 (120)
External length / width / height ^D	cm	741 / 233 / 294	741 / 233 / 294
Internal width / height	cm	218 / 213	218 / 213
Wheelbase	mm	4.035	4.035
Mass in running order ^F	kg	3.014	2.994
Technically permissible maximum laden mass	kg	3.500 (S) 3.650 (O)	3.500 (S) 3.650 (O)
Technically permissible maximum towable mass ^E	kg	2.000	2.000
Type-approved seats / Berths ^A		4 (S) / 2 (S) + 2 (O) + 1 (O)	4 (S) / 2 (S) + 2 (O) + 1 (O)
Wall / roof / floor (thickness)	mm	34 / 33 / 49	34 / 33 / 49
Windows		5 (S) + 1 (O)	5 (S) + 1 (O)
70 x 50 cm panoramic roof-light in living area ^L		S	S
40 x 40 cm roof-light in sleeping area		S	S
Garage dimensions (W x H x L)	cm	218x118x109	218x120 90x109
Right hatch / left hatch (W x H)	cm	93x115 / 93x115	93x115 / 93x115
Maximum fresh water tank capacity depending on configuration and actual load	l	90 + 20	90 + 20
Maximum waste water tank capacity depending on configuration and actual load	l	90	90
Swivel toilet with removable tank (antifreeze)	l	18	18
Face-to-face living room with folding extendable table		S	S
Rear right side bed / rear left side bed	cm	205x80 / 210x80	-
Double rear bed	cm	(O)	-
Manually height-adjustable double rear bed	cm	-	190x148
Dinette bed	cm	200x115 (O)	200x115 (O)
Electric-powered drop-down bed ^{opt I}	cm	200x140	200x140
Refrigerator	l	140	140 l
Hot air channeled heating system	kW	6	6
Water heating system and heat exchanger in motion	kW	(O) 6	(O) 6
12 V sockets - 230 V sockets - USB socket - TV sockets in living room - rear bedroom		2-6-(1+2) 1-/	1-5-(1+2) - 1-/
Gas cylinder compartment	kg	2x11 kg	2x11 kg

OPTIONAL

Optional Chassis		Fiat Ducato 43 Heavy	Fiat Ducato 43 Heavy
Maximum power	kW (hp)	103 (140) 117 (160) 130 (180)	103 (140) 117 (160) 130 (180)
Mass in running order ^F	kg	3.054	3.034
Technically permissible maximum laden mass ^B	kg	4.250 (S) 4.400 (O)	4.250 (S) 4.400 (O)
Technically permissible maximum towable mass ^E	kg	2.000	2.000
Type-approved seats ^A		4 (S)	4 (S)

ND | To be defined O | Option S | Standard P | Pack

KOSMO LOW-PROFILES PACKS

CHASSIS PACK

PGA
+ 6.4 KG

- Electric and heated door mirrors
- Steering wheel radio controls
- DAB radio antenna
- DAB car radio and speaker arrangement in cab

SMART HOME PACK

SH4
+ 7 KG

- Gas detector
- Heated tank
- Gas regulator with automatic heat exchanger and anti-ice device
- Swivel TV holder

CHASSIS DESIGN PACK BASIC

PDN
+ 1 KG

- Glossy black engine grille
- Leather-covered steering wheel and gear knob, original Fiat
- Headlights with black design surround
- Dashboard in „Techno Trim“ version

COMFORT PACK KOSMO

PJ9
+ 12.5 KG

- Wooden footboard for shower tray
- Driver's cabin carpet and entrance mat
- Bathroom window ⁽¹⁰⁾
- Insulated waste water tank

**DRIVING ASSISTANCE
SYSTEMS PACK** **2PP**
+ 0.2 KG

- Autonomous Emergency Brake Control with Pedestrian and Cyclist detection, Lane Control (Lane Support System), Rain and Dusk Sensor , Traffic Sign Recognition + High Beam Recognition

**MULTIMEDIA PACK
KOSMO** **MM3**
+ 7.8 KG

- Multimedia System 8", DAB car radio, Touchscreen, Navigation and map update 3 years, speakers, rear view camera

**ALARM
PACK** **S1A**
+ 4.2 KG

- Front parking sensors (4 pcs.)
- Rear parking sensors (4 pcs.)
- Volumetric-perimeter anti-theft device (incl. garage doors and hatches), remote control integrated in engine key
- Anti-theft sensors for windows (6 pieces)

KOSMO LOW-PROFILES ACCESSORIES

Code No.	Accessories	Price £ *	Kg	209	509	509L	512
CHASSIS AND CAB							
2043605	Increased weight 3,650 kg, Fiat Light chassis	£ 250	0,0 kg	0	0	0	0
2734600	Fiat Ducato Heavy Chassis 4,250 kg (possible only with 140 BHP)	£ 1,300	40,0 kg	0	0	0	0
2734602	Fiat Heavy Chassis 4,400 kg (possible only with 160 BHP or 180 BHP)	£ 1,560	40,0 kg	0	0	0	0
3057312	Fiat 2,2 Engine, 140 BHP, Euro 6d Final (Extra charge compared to 120 BHP)	£ 820	0,0 kg	0	0	0	0
3056219	Fiat 2,2 Engine, 160 BHP, Euro 6d Final (Extra charge compared to 120 BHP)	£ 2,590	15,0 kg	0	0	0	0
3056223	Fiat 2,2 Engine, 180 BHP, Euro 6d Final (Extra charge compared to 120 BHP)	£ 4,490	15,0 kg	0	0	0	0
2JH-3	Automatic transmission for 140 BHP engine - Light chassis	£ 3,020	48,0 kg	0	0	0	0
2JH-4	Automatic transmission for 160 BHP and 180 BHP engine - Light chassis	£ 3,020	33,0 kg	0	0	0	0
AT9-HE140	140 BHP Automatic gearbox for Heavy Chassis	£ 3,020	18,0 kg	0	0	0	0
AT9H160180	160 BHP and 180BHP Automatic gearbox for Heavy Chassis	£ 3,020	3,0 kg	0	0	0	0
2PZ	U-Connect 10" Radio NAV Touch HD Display - Fiat original part	£ 1,750	1,9 kg	0	0	0	0
2QF	Full-Digital Cluster - Fiat original part	£ 480	0,3 kg	0	0	0	0
320	Steering wheel and gear lever in real leather, Fiat original part	£ 280	0,3 kg	0	0	0	0
5QD	Engine battery cut off switch, Fiat original part	£ 170	0,0 kg	0	0	0	0
3065127	Diesel tank 90 l, Fiat chassis	£ 90	12,0 kg	0	0	0	0
FO7	Laika logo stickers for Fiat wheel covers or alloy wheels (4 pieces)	£ 40	0,1 kg	0	0	0	0
431-2	16" Alloy wheels, Fiat original parts, 35 Light chassis (4 pieces)	£ 480	0,0 kg	0	0	0	0
0R2-2	16" Alloy wheels black matte, Fiat original parts, 35 Light chassis (4 pieces)	£ 590	0,0 kg	0	0	0	0
1LR	16" Alloy wheels Fiat original parts, Heavy chassis (4 pieces)	£ 480	0,0 kg	0	0	0	0
LPZ	Fog lights with cornering function, Fiat original part	£ 260	2,0 kg	0	0	0	0
9WE	Full LED headlights, Fiat original part	£ 1,590	0,0 kg	0	0	0	0
205	Programmable Diesel heating, Fiat original part	£ 1,060	6,0 kg	0	0	0	0
09U	Heated cab seats, Fiat original part (2 pieces - only in combination with Udine and Firenze upholstery)	£ 650	1,0 kg	0	0	0	0
FD6	Removable fifth seat	£ 480	11,0 kg	-	0	-	-
67333	Automatic cab air conditioning, Fiat original part	£ 440	0,0 kg	0	0	0	0
RFX	Wireless charger for mobile phones - Fiat original part	£ 430	0,0 kg	0	0	0	0
365	TPMS tyre pressure checking system	£ 230	0,5 kg	0	0	0	0
2808053	Internal sliding blinds, for windshield and cab windows (they replace the standard separation curtain between cab/living area)	£ 610	4,5 kg	0	0	0	0
JKU	230 V socket in driver's cab, Fiat original part	£ 290	0,1 kg	0	0	0	0
3YL	Gloss black underride guard, Fiat original part	£ 90	0,0 kg	0	0	0	0

Code No. Accessories Price £ * Kg 209 509 509L 512

INTERIOR ACCESSORIES

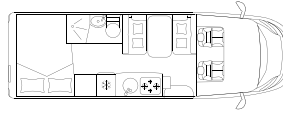
F04	Electric drop-down bed above the lounge ⁽³⁾	£ 1,420	40.0 kg	O	O	O	O
FC5	Bed conversion from single beds to double bed (with ladder)	£ 310	12.0 kg	O	O	O	-
FD7	Seating group bed (single bed) and table with telescopic base	£ 320	10.0 kg	-	O	O	O
TT6	Upholstery Verona	£ 430	0.0 kg	O	O	O	O
EE	Upholstery Firenze, leatherette	£ 620	0.0 kg	O	O	O	O
TT2	Upholstery Udine, leatherette	£ 620	0.0 kg	O	O	O	O
TT5	Upholstery Milano, real leather	£ 2,640	0.0 kg	O	O	O	O
2989114	19" TV LED DVD, with decoder and adjustable TV stand	£ 860	7.5 kg	O	O	O	O
2989118	22" TV LED DVD, with decoder and adjustable TV stand	£ 970	7.5 kg	O	O	O	O
3171460	32" TV LED DVD, with decoder and adjustable TV stand	£ 1,310	10.3 kg	-	O	O	O
FD1	Adjustable TV stand	£ 160	3.0 kg	O	O	O	O
FB3	Heating Combi 6 E	£ 500	3.0 kg	O	O	O	O
FD5	Underfloor heating (part of floor)	£ 540	9.0 kg	O	O	O	O
ALD	Hot water heating system (incl. motor heat exchanger)	£ 2,490	57.0 kg	O	O	O	O
F58	Remote control of the heating via smartphone ⁽⁶⁾	£ 450	1.0 kg	O	O	O	O
2333651	Table with folding top and telescopic leg (bed in lounge not possible)	£ 270	10.0 kg	O	O	-	-
F07	Gas oven (installation above the fridge)	£ 590	20.0 kg	-	O	O	O
FO	Gas oven with grill function	£ 620	17.0 kg	O	O	O	O
F27	Extractor fan	£ 440	2.0 kg	O	O	O	O
FR6	Inverter 350W	£ 230	1.7 kg	O	O	O	O
C30	Second living area battery AGM 95 Ah	£ 290	27.0 kg	O	O	O	O

EXTERIOR ACCESSORIES

F29	External shower (cold water)	£ 200	2.5 kg	O	O	O	O
67201	Tow hitch	£ 1,580	35.0 kg	-	O	O	O
67205	Tow hitch	£ 1,580	35.0 kg	O	-	-	-
F44	External Gas socket	£ 220	1.0 kg	O	O	O	O
37831	Laika foldable bicycle carrier for 3 bikes	£ 370	9.3 kg	O	O	O	O
37832	Bicycle rail for 4th bicycle	£ 90	1.0 kg	O	O	O	O
D11	Awning (manual) 4 m, exterior paint white	£ 920	30.0 kg	O	-	-	-
C49	Awning (manual) 4,5 m, exterior paint white	£ 960	34.0 kg	-	O	O	O
AN3	Satellite aerial 80 HD	£ 2,180	17.0 kg	O	O	O	O
FL6	120 W Solar panel with control and fixing brackets	£ 770	15.5 kg	O	O	O	O
2447744	Parallel engine battery charging system (only in conjunction with solar panel)	£ 130	1.0 kg	O	O	O	O
F23	Stabilising jacks	£ 280	6.0 kg	O	O	O	O
2818306	2200 W Air conditioning in living room	£ 2,250	34.0 kg	O	O	O	O

KOSMO OVER-CAB

OVERVIEW OF ALL MODELS



MODELS

F510

Standard chassis		Fiat Ducato 35 Light
Engine displacement /maximum power	cc / kW (hp)	2184 / 88 (120)
External length / width / height ^D	cm	725/ 233 / 314
Internal width / height	cm	218 / 209,5
Wheelbase	mm	4.035
Mass in running order ^F	kg	3.015
Technically permissible maximum laden mass	kg	3.500 (S) 3.650 (O)
Technically permissible maximum towable mass ^E	kg	2.000
Type-approved seats / Berths ^A		5 / 4 (S) + 1 (O)
Wall / roof / floor (thickness)	mm	34/33/49
Windows		6 (S)
70 x 50 cm panoramic roof-light in living area		S
40 x 40 cm roof-light in sleeping area		S
Garage dimensions (W x H x L)	cm	218x124x155 / 134
Right hatch / left hatch (W x H)	cm	105x120 / 105x80
Maximum fresh water tank capacity depending on configuration and actual load	l	90 + 20
Maximum waste water tank capacity depending on configuration and actual load	l	90
Swivel toilet with removable tank (antifreeze)	l	18
Living area with classic dinette		S
Double rear bed	cm	212x149 /129
Dinette bed	cm	180x100 (O)
Overcab bed	cm	211x159
Refrigerator	l	113 l (S) 167 l (O)
Hot air channeled heating system	kW	6
12 V sockets - 230 V sockets - USB socket - TV sockets in living room - rear bedroom		2-4-(1+4) - 1 / 1
Gas cylinder compartment	kg	2x11

OPTIONAL

Optional Chassis		Fiat Ducato 43 Heavy
Maximum power	kW (CV)	103 (140) 117 (160) 130 (180)
Mass in running order ^F	kg	3.055
Technically permissible maximum laden mass ^B	kg	4.250 (S) 4.400 (O)
Technically permissible maximum towable mass ^E	kg	2.000
Type-approved seats ^A		6

KOSMO OVER-CAB PACKS

CHASSIS PACK

PGA
+ 6.4 KG

- Electric and heated door mirrors
- Steering wheel radio controls
- DAB radio antenna
- DAB car radio and speaker arrangement in cab

SMART HOME PACK

SH4
+ 7 KG

- Gas detector
- Heated tank
- Gas regulator with automatic heat exchanger and anti-ice device
- Swivel TV holder

CHASSIS DESIGN PACK BASIC

PDN
+ 1 KG

- Glossy black engine grille
- Leather-covered steering wheel and gear knob, original Fiat
- Headlights with black design surround
- Dashboard in „Techno Trim“ version

COMFORT PACK KOSMO

PJ9
+ 12.5 KG

- Wooden footboard for shower tray
- Driver's cabin carpet and entrance mat
- Bathroom window ⁽¹⁰⁾
- Insulated waste water tank

DRIVING ASSISTANCE SYSTEMS PACK

2PP
+ 0.2 KG

- Autonomous Emergency Brake Control with Pedestrian and Cyclist detection, Lane Control (Lane Support System), Rain and Dusk Sensor, Traffic Sign Recognition + High Beam Recognition

ALARM PACK

S1A
+ 4.2 KG

- Front parking sensors (4 pcs.)
- Rear parking sensors (4 pcs.)
- Volumetric-perimeter anti-theft device (incl. garage doors and hatches), remote control integrated in engine key
- Anti-theft sensors for windows (6 pieces)

MULTIMEDIA PACK KOSMO

MM3
+ 7.8 KG

- Multimedia System 8", DAB car radio, Touchscreen, Navigation and map update 3 years, speakers, rear view camera

KOSMO OVER-CAB ACCESSORIES

Code No. Accessories Price £ * Kg F 510

CHASSIS AND CAB

2043605	Increased weight 3,650 kg, Fiat Light chassis	£ 250	0.0 kg	O
2734600	Fiat Ducato Heavy Chassis 4,250 kg (possible only with 140 BHP)	£ 1,300	40.0 kg	O
2734602	Fiat Heavy Chassis 4,400 kg (possible only with 160 BHP or 180 BHP)	£ 1,560	40.0 kg	O
3057312	Fiat 2.2 Engine, 140 BHP, Euro 6d Final (Extra charge compared to 120 BHP)	£ 820	0.0 kg	O
3056219	Fiat 2.2 Engine, 160 BHP, Euro 6d Final (Extra charge compared to 120 BHP)	£ 2,590	15.0 kg	O
3056223	Fiat 2.2 Engine, 180 BHP, Euro 6d Final (Extra charge compared to 120 BHP)	£ 4,490	15.0 kg	O
2JH-3	Automatic transmission for 140 BHP engine - Light chassis	£ 3,020	48.0 kg	O
2JH-4	Automatic transmission for 160 BHP and 180 BHP engine - Light chassis	£ 3,020	33.0 kg	O
AT9-HE140	140 BHP Automatic gearbox for Heavy Chassis	£ 3,020	18.0 kg	O
AT9H160180	160 BHP and 180BHP Automatic gearbox for Heavy Chassis	£ 3,020	3.0 kg	O
2PZ	U-Connect 10" Radio NAV Touch HD Display - Fiat original part	£ 1,750	1.9 kg	O
2QF	Full-Digital Cluster - Fiat Fiat original part	£ 480	0.3 kg	O
320	Steering wheel and gear lever in real leather, Fiat original part	£ 280	0.3 kg	O
5QD	Engine battery cut off switch, Fiat original part	£ 170	0.0 kg	O
3065127	Diesel tank 90 l, Fiat chassis	£ 90	12.0 kg	O
FO7	Laika logo stickers for Fiat wheel covers or alloy wheels (4 pieces)	£ 40	0.1 kg	O
431-2	16" Alloy wheels, Fiat original parts, 35 Light chassis (4 pieces)	£ 480	0.0 kg	O
0R2-2	16" Alloy wheels black matte, Fiat original parts, 35 Light chassis (4 pieces)	£ 590	0.0 kg	O
1LR	16" Alloy wheels Fiat original parts, Heavy chassis (4 pieces)	£ 480	0.0 kg	O
LPZ	Fog lights with cornering function, Fiat original part	£ 260	2.0 kg	O
9WE	Full LED headlights, Fiat original part	£ 1,590	0.0 kg	O
205	Programmable Diesel heating, Fiat original part	£ 1,060	6.0 kg	O
09U	Heated cab seats, Fiat original part (2 pieces - only in combination with Udine and Firenze upholstery)	£ 650	1.0 kg	O
67333	Automatic cab air conditioning, Fiat original part	£ 440	0.0 kg	O
RFX	Wireless charger for mobile phones - Fiat original part	£ 430	0.0 kg	O
365	TPMS tyre pressure checking system	£ 230	0.5 kg	O
2808053	Internal sliding blinds, for windshield and cab windows (they replace the standard separation curtain between cab/living area)	£ 610	4.5 kg	O
JKU	230 V socket in driver's cab, Fiat original part	£ 290	0.1 kg	O
3YL	Gloss black underride guard, Fiat original part	£ 90	0.0 kg	O

Code No. Accessories Price £ * Kg F 510

INTERIOR ACCESSORIES

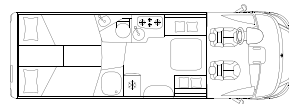
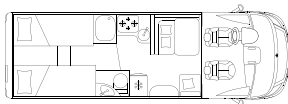
FF2	Isofix fasteners (2 pieces)	£ 260	4.0 kg	O
FD9	Bed conversion seating group (single bed)	£ 100	2.0 kg	O
TT6	Upholstery Verona	£ 430	0.0 kg	O
EE	Upholstery Firenze, leatherette	£ 620	0.0 kg	O
TT2	Upholstery Udine, leatherette	£ 620	0.0 kg	O
TT5	Upholstery Milano, real leather	£ 2,640	0.0 kg	O
2989114	19" TV LED DVD, with decoder and adjustable TV stand	£ 860	7.5 kg	O
2989118	22" TV LED DVD, with decoder and adjustable TV stand	£ 970	7.5 kg	O
FD1	Adjustable TV stand	£ 160	3.0 kg	O
FB3	Heating Combi 6 E	£ 500	3.0 kg	O
FD5	Underfloor heating (part of floor)	£ 540	9.0 kg	O
F58	Remote control of the heating via smartphone ⁽⁶⁾	£ 450	1.0 kg	O
FO	Gas oven with grill function	£ 620	17.0 kg	O
C35	Fridge 167 l	£ 640	15.0 kg	O
F27	Extractor fan	£ 440	2.0 kg	O
FR6	Inverter 350W	£ 230	1.7 kg	O
C30	Second living area battery AGM 95 Ah	£ 290	27.0 kg	O
FF3	Two additional seats with cushions and extendable table up to 140 cm in living area	£ 550	11.0 kg	O
FX3	Two additional seats (with cushions) and table (extendable up to 140 cm, in living area) with bed conversion	£ 560	16.0 kg	O

EXTERIOR ACCESSORIES

F29	External shower (cold water)	£ 200	2.5 kg	O
67203	Tow hitch	£ 1,580	35.0 kg	O
37831	Laika foldable bicycle carrier for 3 bikes	£ 370	9.3 kg	O
37832	Bicycle rail for 4th bicycle	£ 90	1.0 kg	O
C49	Awning (manual) 4.5 m, exterior paint white	£ 960	34.0 kg	O
AN3	Satellite aerial 80 HD	£ 2,180	17.0 kg	O
FL6	120 W Solar panel with control and fixing brackets	£ 770	15.5 kg	O
2447744	Parallel engine battery charging system (only in conjunction with solar panel)	£ 130	1.0 kg	O
F23	Stabilising jacks	£ 280	6.0 kg	O
2818306	2200 W Air conditioning in living room	£ 2,250	34.0 kg	O

KOSMO MOTORHOMES

OVERVIEW OF ALL MODELS



MODELS

909

909 L

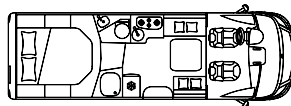
Standard chassis		Fiat Ducato 35 Light	Fiat Ducato 35 Light
Engine displacement / maximum power	cc / kW (hp)	2184 / 88 (120)	2184 / 88 (120)
External length / width / height ^D	cm	741 / 233 / 294	741 / 233 / 294
Internal width / height	cm	218 / 213	218 / 213
Wheelbase	mm	4.035	4.035
Mass in running order ^F	kg	3.041	3.099
Technically permissible maximum laden mass	kg	3.500 (S) 3.650 (O)	3.500 (S) 3.650 (O)
Technically permissible maximum towable mass ^E	kg	2.000	2.000
Type-approved seats / Berths ^A		4 (S) 5 (O) / 4 (S) + 1 (O)	4 (S) / 4 (S) + 1 (O)
Wall / roof / floor (thickness)	mm	34/33/49	34/33/49
Windows		4 (S) + 1 (O)	5 (S) + 1 (O)
70 x 50 cm panoramic roof-light in living area		S	S
40 x 40 cm roof-light in sleeping area		S	S
Garage dimensions (W x H x L)	cm	218x121x109	218x118x109
Right hatch / left hatch (W x H)	cm	93x115 / 93x115	93x115 / 93x115
Maximum fresh water tank capacity depending on configuration and actual load	l	90 + 20	90 + 20
Maximum waste water tank capacity depending on configuration and actual load	l	90	90
Swivel toilet with removable tank (antifreeze)	l	18	18
Face-to-face living room with folding extendable table		-	S
Rear right side bed / rear left side bed	cm	207x80 / 200x80	205x80 / 210x80
Double rear bed	cm	(O)	(O)
Manually height-adjustable double rear bed	cm	-	-
Dinette bed	cm	200x115 (O)	200x115 (O)
Drop-down bed	cm	196x150	196x150
Refrigerator	l	140	140
Hot air channeled heating system	kW	6	6
Water heating system and heat exchanger in motion	kW	(O) 6	(O) 6
12 V sockets - 230 V sockets - USB socket - TV sockets in living room - rear bedroom		2-6-(1+2) - 1 - /	1-5-(1+2) - 1- /
Gas cylinder compartment	kg	2x11	2x11

OPTIONAL

Optional Chassis		Fiat Ducato 43 Heavy	Fiat Ducato 43 Heavy
Maximum power	kW (hp)	103 (140) 117 (160) 130 (180)	103 (140) 117 (160) 130 (180)
Mass in running order ^F	kg	3.081	3.139
Technically permissible maximum laden mass ^B	kg	4.250 (S) 4.400 (O)	4.250 (S) 4.400 (O)
Technically permissible maximum towable mass ^E	kg	2000	2000
Type-approved seats ^A		4 (S) 5 (O)	4 (S)

KOSMO MOTORHOMES

OVERVIEW OF ALL MODELS



MODELS

912

Standard chassis		Fiat Ducato 35 Light
Engine displacement / maximum power	cc / kW (hp)	2184 / 88 (120)
External length / width / height ^D	cm	741 / 233 / 294
Internal width / height	cm	218 / 213
Wheelbase	mm	4.035
Mass in running order ^F	kg	3.068
Technically permissible maximum laden mass	kg	3.500 (S) 3.650 (O)
Technically permissible maximum towable mass ^E	kg	2.000
Type-approved seats / Berths ^A		4 (S) / 4 (S) + 1 (O)
Wall / roof / floor (thickness)	mm	34/33/49
Windows		5 (S) + 1 (O)
70 x 50 cm panoramic roof-light in living area		S
40 x 40 cm roof-light in sleeping area		S
Garage dimensions (W x H x L)	cm	218x90 120x109
Right hatch / left hatch (W x H)	cm	93x115 / 93x115
Maximum fresh water tank capacity depending on configuration and actual load ^G	l	90 + 20
Maximum waste water tank capacity depending on configuration and actual load	l	90
Swivel toilet with removable tank (antifreeze)	l	18
Face-to-face living room with folding extendable table		S
Rear right side bed / rear left side bed	cm	-
Double rear bed	cm	-
Manually height-adjustable double rear bed	cm	190x148
Dinette bed	cm	200x115 (O)
Drop-down bed	cm	196x150
Refrigerator	l	140
Hot air channeled heating system	kW	6
Water heating system and heat exchanger in motion	kW	(O) 6
12 V sockets - 230 V sockets - USB socket - TV sockets in living room - rear bedroom		1-5-(1+2) - 1- /
Gas cylinder compartment	kg	2x11

OPTIONAL

Optional Chassis		Fiat Ducato 43 Heavy
Maximum power	kW (hp)	103 (140) 117 (160) 130 (180)
Mass in running order ^F	kg	3.108
Technically permissible maximum laden mass ^B	kg	4.250 (S) 4.400 (O)
Technically permissible maximum towable mass ^E	kg	2000
Type-approved seats ^A		4 (S)

ND | To be defined O | Option S | Standard P | Pack

KOSMO MOTORHOMES PACKS

CHASSIS PACK A-CLASS

HPG
+ 1.3 KG

-
- Steering wheel radio controls
 - Traction+, Hill Descent
 - Leather-wrapped steering wheel and gearstick knob, Fiat original
 - Dashboard in „Techno Trim“ version

SMART HOME PACK

SH4
+ 7 KG

-
- Gas detector
 - Heated tank
 - Gas regulator with automatic heat exchanger and anti-ice device
 - Swivel TV holder

MULTIMEDIA PACK KOSMO

MM3
+ 7.8 KG

-
- Multimedia System 8“, DAB car radio, Touchscreen, Navigation and map update 3 years, speakers, rear view camera

COMFORT PACK KOSMO

PJ9
+ 12.5 KG

-
- Wooden footboard for shower tray
 - Driver's cabin carpet and entrance mat
 - Bathroom window ⁽¹⁰⁾
 - Insulated waste water tank

ALARM PACK

S1A
+ 4.2 KG

-
- Front parking sensors (4 pcs.)
 - Rear parking sensors (4 pcs.)
 - Volumetric-perimeter anti-theft device (incl. garage doors and hatches), remote control integrated in engine key
 - Anti-theft sensors for windows (6 pieces)



KOSMO MOTORHOMES

ACCESSORIES

Code No.	Accessories	Price £ *	Kg	909	909L	912
CHASSIS AND CAB						
2043605	Increased weight 3,650 kg, Fiat Light chassis	£ 250	0.0 kg	0	0	0
2734600	Fiat Ducato Heavy Chassis 4,250 kg (possible only with 140 BHP)	£ 1,300	40.0 kg	0	0	0
2734602	Fiat Heavy Chassis 4,400 kg (possible only with 160 BHP or 180 BHP)	£ 1,560	40.0 kg	0	0	0
3057312	Fiat 2.2 Engine, 140 BHP, Euro 6d Final (Extra charge compared to 120 BHP)	£ 820	0.0 kg	0	0	0
3056219	Fiat 2.2 Engine, 160 BHP, Euro 6d Final (Extra charge compared to 120 BHP)	£ 2,590	15.0 kg	0	0	0
3056223	Fiat 2.2 Engine, 180 BHP, Euro 6d Final (Extra charge compared to 120 BHP)	£ 4,490	15.0 kg	0	0	0
2JH-3	Automatic transmission for 140 BHP engine - Light chassis	£ 3,020	48.0 kg	0	0	0
2JH-4	Automatic transmission for 160 BHP and 180 BHP engine - Light chassis	£ 3,020	33.0 kg	0	0	0
AT9-HE140	140 BHP Automatic gearbox for Heavy Chassis	£ 3,020	18.0 kg	0	0	0
AT9H160180	160 BHP and 180BHP Automatic gearbox for Heavy Chassis	£ 3,020	3.0 kg	0	0	0
2PZ	U-Connect 10" Radio NAV Touch HD Display - Fiat original part	£ 1,750	1.9 kg	0	0	0
2QF	Full-Digital Cluster - Fiat Fiat original part	£ 480	0.3 kg	0	0	0
320	Steering wheel and gear lever in real leather, Fiat original part	£ 280	0.3 kg	0	0	0
5QD	Engine battery cut off switch, Fiat original part	£ 170	0.0 kg	0	0	0
3065127	Diesel tank 90 l, Fiat chassis	£ 90	12.0 kg	0	0	0
F07	Laika logo stickers for Fiat wheel covers or alloy wheels (4 pieces)	£ 40	0.1 kg	0	0	0
431-2	16" Alloy wheels, Fiat original parts, 35 Light chassis (4 pieces)	£ 480	0.0 kg	0	0	0
0R2-2	16" Alloy wheels black matte, Fiat original parts, 35 Light chassis (4 pieces)	£ 590	0.0 kg	0	0	0
1LR	16" Alloy wheels Fiat original parts, Heavy chassis (4 pieces)	£ 480	0.0 kg	0	0	0
205	Programmable Diesel heating, Fiat original part	£ 1,060	6.0 kg	0	0	0
FD6	Removable fifth seat	£ 480	11.0 kg	0	-	-
67333	Automatic cab air conditioning, Fiat original part	£ 440	0.0 kg	0	0	0
LED	LED headlights	£ 1,590	2.0 kg	0	0	0
2026176	Fog lights (for A-class vehicles)	£ 380	2.0 kg	0	0	0
RFX	Wireless charger for mobile phones - Fiat original part	£ 430	0.0 kg	0	0	0
365	TPMS tyre pressure checking system	£ 230	0.5 kg	0	0	0
JKU	230 V socket in driver's cab, Fiat original part	£ 290	0.1 kg	0	0	0
FF6	White exterior mirrors	£ 270	0.0 kg	0	0	0

Code No. Accessories Price £ * Kg 909 909L 912

INTERIOR ACCESSORIES

FC5	Bed conversion from single beds to double bed (with ladder)	£ 310	12.0 kg	O	O	-
FD7	Seating group bed (single bed) and table with telescopic base	£ 320	10.0 kg	O	O	O
TT6	Upholstery Verona	£ 430	0.0 kg	O	O	O
EE	Upholstery Firenze, leatherette	£ 620	0.0 kg	O	O	O
TT2	Upholstery Udine, leatherette	£ 620	0.0 kg	O	O	O
TT5	Upholstery Milano, real leather	£ 2,640	0.0 kg	O	O	O
2989118	22" TV LED DVD, with decoder and adjustable TV stand	£ 970	7.5 kg	O	O	O
3171460	32" TV LED DVD, with decoder and adjustable TV stand	£ 1,310	10.3 kg	O	O	O
FD1	Adjustable TV stand	£ 160	3.0 kg	O	O	O
FB3	Heating Combi 6 E	£ 500	3.0 kg	O	O	O
FD5	Underfloor heating (part of floor)	£ 540	9.0 kg	O	O	O
ALD	Hot water heating system (incl. motor heat exchanger)	£ 2,490	57.0 kg	O	O	O
F58	Remote control of the heating via smartphone ⁽⁶⁾	£ 450	1.0 kg	O	O	O
F07	Gas oven (installation above the fridge)	£ 590	20.0 kg	O	O	O
F0	Gas oven with grill function	£ 620	17.0 kg	O	O	O
F27	Extractor fan	£ 440	2.0 kg	O	O	O
FR6	Inverter 350W	£ 230	1.7 kg	O	O	O
C30	Second living area battery AGM 95 Ah	£ 290	27.0 kg	O	O	O

EXTERIOR ACCESSORIES

F29	External shower (cold water)	£ 200	2.5 kg	O	O	O
67201	Tow hitch	£ 1,580	35.0 kg	O	O	O
F44	External Gas socket	£ 220	1.0 kg	O	O	O
37831	Laika foldable bicycle carrier for 3 bikes	£ 370	9.3 kg	O	O	O
37832	Bicycle rail for 4th bicycle	£ 90	1.0 kg	O	O	O
FF1	Awning (manual) 5 m, exterior paint white	£ 1,120	37.5 kg	O	O	O
AN3	Satellite aerial 80 HD	£ 2,180	17.0 kg	O	O	O
FL6	120 W Solar panel with control and fixing brackets	£ 770	15.5 kg	O	O	O
2447744	Parallel engine battery charging system (only in conjunction with solar panel)	£ 130	1.0 kg	O	O	O
F23	Stabilising jacks	£ 280	6.0 kg	O	O	O
2818306	2200 W Air conditioning in living room	£ 2,250	34.0 kg	O	O	O



KOSMO EMBLEMA

KOSMO EMBLEMA LOW-PROFILES | MOTORHOMES

COMMON STANDARD EQUIPMENT

CHASSIS

- Fiat Ducato, 140 BHP, Turbo Diesel Common Rail
- Enlarged rear track
- 16" Alloy wheels
- Fix & Go Tyre repair set
- 75 l diesel tank
- Electronic Stability Control: ESC, ABS, ASR, Hill Holder, Roll Over Mitigation, Crosswind Assist, Trailer Stability Control System, Post Collision Braking System
- Cruise control
- Eco-Pack with Start&Stop
- Manual air conditioning for cab
- Driver and passenger airbags
- Height adjustable steering wheel
- Electric windows in cab

CAB

- Central locking of cab and living area doors with remote control
- Pleated cab blinds
- Cab carpet
- 8 " multimedia system, DAB radio, touch screen, sat nav with map updates for 3 years, speakers and reversing camera

BODYWORK

- Insulation in polystyrene foam (EPS)
- GRP sub-floor
- Aluminium side skirts
- Garage with low floor, non-slip coating, lighting, heating and rails with load hooks that can be repositioned
- Garage with maximum payload 150 kg depending on configuration and actual load in use
- Power socket in the garage
- Garage with double external access door
- Entrance with integrated step
- Courtesy handle in the entrance area
- Premium XL living space door with centralised closure, remote control, window, blind, storage compartment and mosquito net
- Windows with frame, flat window pane, blind and mosquito net
- External LED light

KITCHEN

- Scratch and fingerprint resistant kitchen and table tops
- Indirect lighting under kitchen top
- Stainless steel sink
- Multifunctional sink cover (chopping board and additional wall shelf)
- 3-burner stove
- Refrigerator with automatic energy source selection (AES)
- Automatic soft-close drawers
- 230 V outlet in kitchen
- Chrome metal spice rack shelf
- Kitchen and living room window frame covering
- Glass protection panels for kitchen walls
- 40 x 40 cm roof-light in kitchen
- Extractor hood

BATHROOM/SHOWER

- Removable toilet cassette (antifreeze)
- Roof-light in bathroom
- Wooden foot board in shower
- Bathroom door also to be used as a separation for the centre of the vehicle (depending on model)
- Separate shower
- Sliding rear doors (depending on model)
- Bathroom window (10)
- Floor storage compartment in the rear area
- 230 V outlet in bathroom

SYSTEMS

- 100% LED lighting over and under wall units
- Adjustable reading lights complete with USB sockets
- Gas combi heating with heat distribution throughout the interior, including rear garage and driver's cabin
- Heating with programmable digital control panel
- Control panel with LED display
- Automatic 18 A battery charger
- Living area battery (95 Ah)
- USB sockets for power supply and charging of mobile devices
- Gas compartment for two cylinders
- Internal water tank, easily accessible for cleaning and inspection, complete with electric immersion pump

- Insulated and heated waste water tank, featuring safety open/ close button
- Exhaust pipes with anti-odour siphons, recovery tank complete with external vent

INTERIOR & COMFORT

- Furniture design "Noce Italiano"
- Anti-condensation walls and ventilation in the furniture for an ideal spread of the heat
- Lounge cushions with removable lining
- Height-adjustable living room headrests
- "Como" upholstery
- Ergonomic table with moving top and easy handling.
- Maxi panoramic roof-light above the lounge
- Beds with wooden staves
- High comfort mattresses with machine washable stretch lining
- Manually height adjustable rear centre bed
- Padded and illuminated rear headboard
- Panels and padded storage pockets dedicated to the sleeping area
- Wardrobes with integrated lighting, to be switched on independently
- TV compartment in living room for LCD/ LED screens up to 32"
- Shoe compartment in the entrance area

STANDARD SETTINGS FOR:

- TV preparation with power supply and aerial cable
- Set-up for coupling
- Set-up for satellite aerial

KOSMO EMBLEMA LOW-PROFILES | MOTORHOMES ADDITIONAL EQUIPMENT FOR EACH RANGE

LOW-PROFILES



- Bodywork and bumpers painted in same colour
- Height-adjustable swivel cab seats with armrests, backrests and fabrics matched to the living area
- Storage compartments and indirect lighting inside front cab
- Cab with integrated Skyview
- Vario-bathroom with integrated separable maxi shower

MOTORHOMES

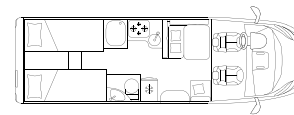
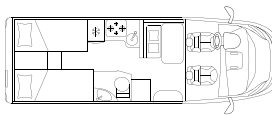


- Descending rear-view mirrors, granturismo bus type, complete with double lens with wide angle function, heating and electrical adjustment, radio antenna integrated
- LED DRL (daytime running lights)
- Driver's door with electric windows
- Height-adjustable swivel cab seats with armrests, integrated seat belts and fabrics matched to the living area
- One-piece GRP front with panoramic windshield
- Drop-down bed with slats and high comfort mattress, courtesy awning, rooflight with transparent dome, double reading lights, shelf and separation curtain for maximum privacy
- Area under drop-down bed with indirect light and reading lights



KOSMO EMBLEMA LOW-PROFILES

OVERVIEW OF ALL MODELS



MODELS

209 E

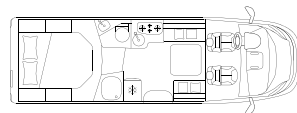
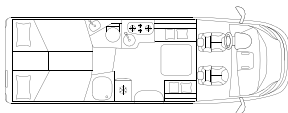
509 E

Standard chassis		Fiat Ducato 35 Light	Fiat Ducato 35 Light
Engine displacement / maximum power	cc / kW (hp)	2184 / 103 (140)	2184 / 103 (140)
External length / width / height ^D	cm	695 / 233 / 294	741 / 233 / 294
Internal width / height	cm	218 / 213	218 / 213
Wheelbase	mm	3.800	4.035
Mass in running order ^F	kg	2.893	2.983
Technically permissible maximum laden mass	kg	3.500 (S) 3.650 (O)	3.500 (S) 3.650 (O)
Technically permissible maximum towable mass ^E	kg	2.000	2.000
Type-approved seats / Berths ^A		4 (S) / 2 (S) + 2 (O)	4 (S) 5 (O) / 2 (S) + 2 (O) + 1 (O)
Wall / roof / floor (thickness)	mm	34 / 33 / 49	34 / 33 / 49
Windows		5 (S)	5 (S)
70 x 50 cm panoramic roof-light in living area ^L		S	S
40 x 40 cm roof-light in sleeping area		S	S
Garage dimensions (W x H x L)	cm	218x120x91	218x121x109
Right hatch / left hatch (W x H)	cm	75x115 / 75x115	93x115 / 93x115
Maximum fresh water tank capacity depending on configuration and actual load	l	90 + 20	90 + 20
Maximum waste water tank capacity depending on configuration and actual load	l	90	90
Swivel toilet with removable tank (antifreeze)	l	18	18
Face-to-face living room with folding extendable table		-	-
Rear right side bed / rear left side bed	cm	201x80 / 186x80	207x80 / 200x80
Double rear bed	cm	(O)	(O)
Manually height-adjustable double rear bed	cm	-	-
Dinette bed	cm	-	200x115 (O)
Electric-powered drop-down bed ^{opt I}	cm	200x140	200x140
Refrigerator	l	140	140
Hot air channeled heating system	kW	6	6
Water heating system and heat exchanger in motion	kW	(O) 6	(O) 6
12 V sockets - 230 V sockets - USB socket - TV sockets in living room - rear bedroom		2-5-(1+2) - 1-/	2-6-(1+2) - 1-/
Gas cylinder compartment	kg	2x11	2x11

OPTIONAL

Optional Chassis		Fiat Ducato 43 Heavy	Fiat Ducato 43 Heavy
Maximum power	kW (hp)	117 (160) 130 (180)	117 (160) 130 (180)
Mass in running order ^F	kg	2.933	3.023
Technically permissible maximum laden mass ^B	kg	4.250 (S) 4.400 (O)	4.250 (S) 4.400 (O)
Technically permissible maximum towable mass ^E	kg	2.000	2.000
Type-approved seats ^A		4 (S)	4 (S) 5 (O)

KOSMO EMBLEMA LOW-PROFILES OVERVIEW OF ALL MODELS



MODELS

509 LE

512 E

Standard chassis		Fiat Ducato 35 Light	Fiat Ducato 35 Light
Engine displacement / maximum power	cc / kW (hp)	2184 / 103 (140)	2184 / 103 (140)
External length / width / height ^D	cm	741 / 233 / 294	741 / 233 / 294
Internal width / height	cm	218 / 213	218 / 213
Wheelbase	mm	4.035	4.035
Mass in running order ^F	kg	3.037	3.017
Technically permissible maximum laden mass	kg	3.500 (S) 3.650 (O)	3.500 (S) 3.650 (O)
Technically permissible maximum towable mass ^E	kg	2.000	2.000
Type-approved seats / Berths ^A		4 (S) / 2 (S) + 2 (O) + 1 (O)	4 (S) / 2 (S) + 2 (O) + 1 (O)
Wall / roof / floor (thickness)	mm	34 / 33 / 49	34 / 33 / 49
Windows		6 (S)	6 (S)
70 x 50 cm panoramic roof-light in living area ^L		S	S
40 x 40 cm roof-light in sleeping area		S	S
Garage dimensions (W x H x L)	cm	218x118x109	218x90 120x109
Right hatch / left hatch (W x H)	cm	93x115 / 93x115	93x115 / 93x115
Maximum fresh water tank capacity depending on configuration and actual load	l	90 + 20	90 + 20
Maximum waste water tank capacity depending on configuration and actual load	l	90	90
Swivel toilet with removable tank (antifreeze)	l	18	18
Face-to-face living room with folding extendable table		S	S
Rear right side bed / rear left side bed	cm	205x80 / 210x80	-
Double rear bed	cm	(O)	-
Manually height-adjustable double rear bed	cm	-	190x148
Dinette bed	cm	200x115 (O)	200x115 (O)
Electric-powered drop-down bed ^{opt I}	cm	200x140	200x140
Refrigerator	l	140	140
Hot air channeled heating system	kW	6	6
Water heating system and heat exchanger in motion	kW	(O) 6	(O) 6
12 V sockets - 230 V sockets - USB socket - TV sockets in living room - rear bedroom		2-6-(1+2) 1-/	1-5-(1+2) - 1-/
Gas cylinder compartment	kg	2x11	2x11

OPTIONAL

Optional Chassis		Fiat Ducato 43 Heavy	Fiat Ducato 43 Heavy
Maximum power	kW (hp)	117 (160) 130 (180)	117 (160) 130 (180)
Mass in running order ^F	kg	3.077	3.057
Technically permissible maximum laden mass ^B	kg	4.250 (S) 4.400 (O)	4.250 (S) 4.400 (O)
Technically permissible maximum towable mass ^E	kg	2.000	2.000
Type-approved seats ^A		4 (S)	4 (S)

ND | To be defined O | Option S | Standard P | Pack

KOSMO EMBLEMA LOW-PROFILES PACKS

CHASSIS PACK

PGA
+ 6.4 KG

- Electric and heated door mirrors
- Steering wheel radio controls
- DAB radio antenna
- DAB car radio and speaker arrangement in cab
- Traction +, Hill Descent

ALARM PACK

S1A
+ 4.2 KG

- Front parking sensors (4 pcs.)
- Rear parking sensors (4 pcs.)
- Volumetric-perimeter anti-theft device (incl. garage doors and hatches), remote control integrated in engine key
- Anti-theft sensors for windows (6 pieces)

CHASSIS DESIGN PACK BASIC

PDN
+ 1 KG

- Glossy black engine grille
- Leather-covered steering wheel and gear knob, original Fiat
- Headlights with black design surround
- Dashboard in „Techno Trim“ version

DRIVING ASSISTANCE SYSTEMS PACK

2PP
+ 0.2 KG

- Autonomous Emergency Brake Control with Pedestrian and Cyclist detection, Lane Control (Lane Support System), Rain and Dusk Sensor , Traffic Sign Recognition + High Beam Recognition



KOSMO EMBLEMA LOW-PROFILES ACCESSORIES

Code No.	Accessories	Price £*	Kg	209 E	509 E	509 LE	512 E
CHASSIS AND CAB							
2043605	Increased weight 3,650 kg, Fiat Light chassis	£ 250	0.0 kg	0	0	0	0
2734600	Fiat Ducato Heavy Chassis 4,250 kg (possible only with 140 BHP)	£ 1,300	40.0 kg	0	0	0	0
2734602	Fiat Heavy Chassis 4,400 kg (possible only with 160 BHP or 180 BHP)	£ 1,560	40.0 kg	0	0	0	0
3056220	Fiat 2.2 Engine, 160 BHP, Euro 6d Final (Extra charge compared to 140 BHP)	£ 1,990	15.0 kg	0	0	0	0
3056222	Fiat 2.2 Engine, 180 BHP, Euro 6d Final (Extra charge compared to 140 BHP)	£ 3,620	15.0 kg	0	0	0	0
2JH-3	Automatic transmission for 140 BHP engine - Light chassis	£ 3,020	48.0 kg	0	0	0	0
2JH-4	Automatic transmission for 160 BHP and 180 BHP engine - Light chassis	£ 3,020	33.0 kg	0	0	0	0
AT9-HE140	140 BHP Automatic gearbox for Heavy Chassis	£ 3,020	18.0 kg	0	0	0	0
AT9H160180	160 BHP and 180BHP Automatic gearbox for Heavy Chassis	£ 3,020	3.0 kg	0	0	0	0
2QF	Full-Digital Cluster - Fiat Fiat original part	£ 480	0.3 kg	0	0	0	0
320	Steering wheel and gear lever in real leather, Fiat original part	£ 280	0.3 kg	0	0	0	0
5QD	Engine battery cut off switch, Fiat original part	£ 170	0.0 kg	0	0	0	0
3065127	Diesel tank 90 l, Fiat chassis	£ 90	12.0 kg	0	0	0	0
FO7	Laika logo stickers for Fiat wheel covers or alloy wheels (4 pieces)	£ 40	0.1 kg	0	0	0	0
0R2-2	16" Alloy wheels black matte, Fiat original parts, 35 Light chassis (4 pieces)	£ 590	0.0 kg	0	0	0	0
LPZ	Fog lights with cornering function, Fiat original part	£ 260	2.0 kg	0	0	0	0
9WE	Full LED headlights, Fiat original part	£ 1,590	0.0 kg	0	0	0	0
205	Programmable Diesel heating, Fiat original part	£ 1,060	6.0 kg	0	0	0	0
09U	Heated cab seats, Fiat original part (2 pieces - only in combination with Udine and Firenze upholstery)	£ 650	1.0 kg	0	0	0	0
FD6	Removable fifth seat	£ 480	11.0 kg	-	0	-	-
67333	Automatic cab air conditioning, Fiat original part	£ 440	0.0 kg	0	0	0	0
RFX	Wireless charger for mobile phones - Fiat original part	£ 430	0.0 kg	0	0	0	0
365	TPMS tyre pressure checking system	£ 230	0.5 kg	0	0	0	0
JKU	230 V socket in driver's cab, Fiat original part	£ 290	0.1 kg	0	0	0	0
3YL	Gloss black underride guard, Fiat original part	£ 90	0.0 kg	0	0	0	0

Code No, Accessories Price £* Kg 209 E 509 E 509 LE 512 E

INTERIOR ACCESSORIES

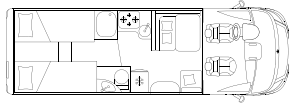
F04	Electric drop-down bed above the lounge ⁽³⁾	£ 1,420	40,0 kg	O	O	O	O
FC5	Bed conversion from single beds to double bed (with ladder)	£ 310	12,0 kg	O	O	O	-
FD7	Seating group bed (single bed) and table with telescopic base	£ 320	10,0 kg	-	O	O	O
TT6	Upholstery Verona	£ 430	0,0 kg	O	O	O	O
EE	Upholstery Firenze, leatherette	£ 620	0,0 kg	O	O	O	O
TT2	Upholstery Udine, leatherette	£ 620	0,0 kg	O	O	O	O
TT5	Upholstery Milano, real leather	£ 2,640	0,0 kg	O	O	O	O
2989114	19" TV LED DVD, with decoder and adjustable TV stand	£ 860	7,5 kg	O	O	O	O
2989118	22" TV LED DVD, with decoder and adjustable TV stand	£ 970	7,5 kg	O	O	O	O
3171460	32" TV LED DVD, with decoder and adjustable TV stand	£ 1,310	10,3 kg	-	O	O	O
FD1	Adjustable TV stand	£ 160	3,0 kg	O	O	O	O
FB3	Heating Combi 6 E	£ 500	3,0 kg	O	O	O	O
FD5	Underfloor heating (part of floor)	£ 540	9,0 kg	O	O	O	O
ALD	Hot water heating system (incl. motor heat exchanger)	£ 2,490	57,0 kg	O	O	O	O
F58	Remote control of the heating via smartphone ⁽⁶⁾	£ 450	1,0 kg	O	O	O	O
2333651	Table with folding top and telescopic leg (bed in lounge not possible)	£ 270	10,0 kg	O	O	-	-
F07	Gas oven (installation above the fridge)	£ 590	20,0 kg	-	O	O	O
FO	Gas oven with grill function	£ 620	17,0 kg	O	O	O	O
FR6	Inverter 350W	£ 230	1,7 kg	O	O	O	O
C30	Second living area battery AGM 95 Ah	£ 290	27,0 kg	O	O	O	O
FL2	Gas detection system	£ 210	2,0 kg	O	O	O	O

EXTERIOR ACCESSORIES

F29	External shower (cold water)	£ 200	2,5 kg	O	O	O	O
67201	Tow hitch	£ 1,580	35,0 kg	-	O	O	O
67205	Tow hitch	£ 1,580	35,0 kg	O	-	-	-
F33	Gas regulator with automatic switchover + defrosting device (DuoControl + EisEX)	£ 400	5,0 kg	O	O	O	O
F44	External Gas socket	£ 220	1,0 kg	O	O	O	O
37831	Laika foldable bicycle carrier for 3 bikes	£ 370	9,3 kg	O	O	O	O
37832	Bicycle rail for 4th bicycle	£ 90	1,0 kg	O	O	O	O
D11	Awning (manual) 4 m, exterior paint white	£ 920	30,0 kg	O	-	-	-
C49	Awning (manual) 4,5 m, exterior paint white	£ 960	34,0 kg	-	O	O	O
AN3	Satellite aerial 80 HD	£ 2,180	17,0 kg	O	O	O	O
FL6	120 W Solar panel with control and fixing brackets	£ 770	15,5 kg	O	O	O	O
2447744	Parallel engine battery charging system (only in conjunction with solar panel)	£ 130	1,0 kg	O	O	O	O
F23	Stabilising jacks	£ 280	6,0 kg	O	O	O	O
2818306	2200 W Air conditioning in living room	£ 2,250	34,0 kg	O	O	O	O

KOSMO EMBLEMA MOTORHOMES

OVERVIEW OF ALL MODELS



MODELS

909 E

909 LE

Standard chassis		Fiat Ducato 35 Light	Fiat Ducato 35 Light
Engine displacement / maximum power	cc / kW (hp)	2184 / 103 (140)	2184 / 103 (140)
External length / width / height ^D	cm	741 / 233 / 294	741 / 233 / 294
Internal width / height	cm	218 / 213	218 / 213
Wheelbase	mm	4.035	4.035
Mass in running order ^F	kg	3.064	3.121
Technically permissible maximum laden mass	kg	3.500 (S) 3.650 (O)	3.500 (S) 3.650 (O)
Technically permissible maximum towable mass ^E	kg	2.000	2.000
Type-approved seats / Berths ^A		4 (S) 5 (O) / 4 (S) + 1 (O)	4 (S) 4 (S) + 1 (O)
Wall / roof / floor (thickness)	mm	34/33/49	34/33/49
Windows		5 (S)	6 (S)
70 x 50 cm panoramic roof-light in living area		S	S
40 x 40 cm roof-light in sleeping area		S	S
Garage dimensions (W x H x L)	cm	218x121x109	218x118x109
Right hatch / left hatch (W x H)	cm	93x115 / 93x115	93x115 / 93x115
Maximum fresh water tank capacity depending on configuration and actual load	l	90 + 20	90 + 20
Maximum waste water tank capacity depending on configuration and actual load	l	90	90
Swivel toilet with removable tank (antifreeze)	l	18	18
Face-to-face living room with folding extendable table		-	S
Rear right side bed / rear left side bed	cm	207x80 / 200x80	205x80 / 210x80
Double rear bed	cm	(O)	(O)
Manually height-adjustable double rear bed	cm	-	-
Dinette bed	cm	200x115 (O)	200x115 (O)
Drop-down bed	cm	196x150	196x150
Refrigerator	l	140	140
Hot air channeled heating system	kW	6	6
Water heating system and heat exchanger in motion	kW	(O) 6	(O) 6
12 V sockets - 230 V sockets - USB socket - TV sockets in living room - rear bedroom		2-6-(1+2) - 1 - /	1-5-(1+2) - 1- /
Gas cylinder compartment	kg	2x11	2x11

OPTIONAL

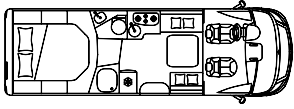
Optional Chassis		Fiat Ducato 43 Heavy	Fiat Ducato 43 Heavy
Maximum power	kW (hp)	117 (160) 130 (180)	117 (160) 130 (180)
Mass in running order ^F	kg	3.104	3.161
Technically permissible maximum laden mass ^B	kg	4.250 (S) 4.400 (O)	4.250 (S) 4.400 (O)
Technically permissible maximum towable mass ^E	kg	2000	2000
Type-approved seats ^A		4 (S) 5 (O)	4 (S)

ND | To be defined

O | Option

S | Standard

P | Pack



KOSMO EMBLEMA MOTORHOMES PACKS

912 E

Fiat Ducato 35 Light
2184 / 103 (140)
741 / 233 / 294
218 /213
4.035
3.105
3.500 (S) 3.650 (O)
2.000
4 (S) / 4 (S) + 1 (O)
34/33/49
6 (S)
S
S
218x90 120x109
93x115 / 93x115
90 + 20
90
18
S
-
-
190x148
200x115 (O)
196x150
140
6
(O) 6
1-5-(1+2) - 1-/
2x11
Fiat Ducato 43 Heavy
117 (160) 130 (180)
3.145
4.250 (S) 4.400 (O)
2000
4 (S)

CHASSIS PACK A-CLASS

HPG
+ 1.3 KG

- Steering wheel radio controls
- Traction+, Hill Descent
- Leather-wrapped steering wheel and gearstick knob, Fiat original
- Dashboard in „Techno Trim“ version

ALARM PACK

S1A
+ 4.2 KG

- Front parking sensors (4 pcs.)
- Rear parking sensors (4 pcs.)
- Volumetric-perimeter anti-theft device (incl. garage doors and hatches), remote control integrated in engine key
- Anti-theft sensors for windows (6 pieces)

KOSMO EMBLEMA MOTORHOMES ACCESSORIES

Code No.	Accessories	Price £*	Kg	909 E	909 LE	912 E
CHASSIS AND CAB						
2043605	Increased weight 3,650 kg, Fiat Light chassis	£ 250	0.0 kg	0	0	0
2734600	Fiat Ducato Heavy Chassis 4,250 kg (possible only with 140 BHP)	£ 1,300	40.0 kg	0	0	0
2734602	Fiat Heavy Chassis 4,400 kg (possible only with 160 BHP or 180 BHP)	£ 1,560	40.0 kg	0	0	0
3056220	Fiat 2.2 Engine, 160 BHP, Euro 6d Final (Extra charge compared to 140 BHP)	£ 1,990	15.0 kg	0	0	0
3056222	Fiat 2.2 Engine, 180 BHP, Euro 6d Final (Extra charge compared to 140 BHP)	£ 3,620	15.0 kg	0	0	0
2JH-3	Automatic transmission for 140 BHP engine - Light chassis	£ 3,020	48.0 kg	0	0	0
2JH-4	Automatic transmission for 160 BHP and 180 BHP engine - Light chassis	£ 3,020	33.0 kg	0	0	0
AT9-HE140	140 BHP Automatic gearbox for Heavy Chassis	£ 3,020	18.0 kg	0	0	0
AT9H160180	160 BHP and 180BHP Automatic gearbox for Heavy Chassis	£ 3,020	3.0 kg	0	0	0
2QF	Full-Digital Cluster - Fiat Fiat original part	£ 480	0.3 kg	0	0	0
320	Steering wheel and gear lever in real leather, Fiat original part	£ 280	0.3 kg	0	0	0
5QD	Engine battery cut off switch, Fiat original part	£ 170	0.0 kg	0	0	0
3065127	Diesel tank 90 l, Fiat chassis	£ 90	12.0 kg	0	0	0
FO7	Laika logo stickers for Fiat wheel covers or alloy wheels (4 pieces)	£ 40	0.1 kg	0	0	0
0R2-2	16" Alloy wheels black matte, Fiat original parts, 35 Light chassis (4 pieces)	£ 590	0.0 kg	0	0	0
205	Programmable Diesel heating, Fiat original part	£ 1,060	6.0 kg	0	0	0
FD6	Removable fifth seat	£ 480	11.0 kg	0	-	-
67333	Automatic cab air conditioning, Fiat original part	£ 440	0.0 kg	0	0	0
LED	LED headlights	£ 1,590	2.0 kg	0	0	0
2026176	Fog lights (for A-class vehicles)	£ 380	2.0 kg	0	0	0
RFX	Wireless charger for mobile phones - Fiat original part	£ 430	0.0 kg	0	0	0
365	TPMS tyre pressure checking system	£ 230	0.5 kg	0	0	0
JKU	230 V socket in driver's cab, Fiat original part	£ 290	0.1 kg	0	0	0
FF6	White exterior mirrors	£ 270	0.0 kg	0	0	0

Code No. Accessories Price £* Kg 909 E 909 LE 912 E

INTERIOR ACCESSORIES

FC5	Bed conversion from single beds to double bed (with ladder)	£ 310	12.0 kg	O	O	-
FD7	Seating group bed (single bed) and table with telescopic base	£ 320	10.0 kg	O	O	O
TT6	Upholstery Verona	£ 430	0.0 kg	O	O	O
EE	Upholstery Firenze, leatherette	£ 620	0.0 kg	O	O	O
TT2	Upholstery Udine, leatherette	£ 620	0.0 kg	O	O	O
TT5	Upholstery Milano, real leather	£ 2,640	0.0 kg	O	O	O
2989118	22" TV LED DVD, with decoder and adjustable TV stand	£ 970	7.5 kg	O	O	O
3171460	32" TV LED DVD, with decoder and adjustable TV stand	£ 1,310	10.3 kg	O	O	O
FD1	Adjustable TV stand	£ 160	3.0 kg	O	O	O
FB3	Heating Combi 6 E	£ 500	3.0 kg	O	O	O
FD5	Underfloor heating (part of floor)	£ 540	9.0 kg	O	O	O
ALD	Hot water heating system (incl. motor heat exchanger)	£ 2,490	57.0 kg	O	O	O
F58	Remote control of the heating via smartphone ⁽⁶⁾	£ 450	1.0 kg	O	O	O
F07	Gas oven (installation above the fridge)	£ 590	20.0 kg	O	O	O
FO	Gas oven with grill function	£ 620	17.0 kg	O	O	O
FR6	Inverter 350W	£ 230	1.7 kg	O	O	O
C30	Second living area battery AGM 95 Ah	£ 290	27.0 kg	O	O	O
FL2	Gas detection system	£ 210	2.0 kg	O	O	O

EXTERIOR ACCESSORIES

F29	External shower (cold water)	£ 200	2.5 kg	O	O	O
67201	Tow hitch	£ 1,580	35.0 kg	O	O	O
F33	Gas regulator with automatic switchover + defrosting device (DuoControl + EisEX)	£ 400	5.0 kg	O	O	O
F44	External Gas socket	£ 220	1.0 kg	O	O	O
37831	Laika foldable bicycle carrier for 3 bikes	£ 370	9.3 kg	O	O	O
37832	Bicycle rail for 4th bicycle	£ 90	1.0 kg	O	O	O
FF1	Awning (manual) 5 m, exterior paint white	£ 1,120	37.5 kg	O	O	O
AN3	Satellite aerial 80 HD	£ 2,180	17.0 kg	O	O	O
FL6	120 W Solar panel with control and fixing brackets	£ 770	15.5 kg	O	O	O
2447744	Parallel engine battery charging system (only in conjunction with solar panel)	£ 130	1.0 kg	O	O	O
F23	Stabilising jacks	£ 280	6.0 kg	O	O	O
2818306	2200 W Air conditioning in living room	£ 2,250	34.0 kg	O	O	O



ECOVIP

ECOVIP LOW-PROFILES | MOTORHOME

COMMON STANDARD EQUIPMENT

CHASSIS

- Fiat Ducato, 120 BHP, Turbo Diesel Common Rail
- Enlarged rear track
- 16" steel wheel rims
- Fix & Go Tyre repair set
- 60 l diesel tank
- Electronic Stability Control: ESC, ABS, ASR, Hill Holder, Roll Over Mitigation, Crosswind Assist, Trailer Stability Control System, Post Collision Braking System
- Cruise control
- Eco-Pack with Start&Stop
- Manual air conditioning for cab
- Driver and passenger airbags
- Height adjustable steering wheel

CAB

- Central locking of cab and living area doors with remote control

BODYWORK

- Insulation in extruded polystyrene foam (XPS)
- Aluminium external walls
- Polyurethane wall and roof framework
- Fibreglass roof
- Rear LED light clusters and dynamic indicators
- Heated and illuminated double floor, with heat storage function, accessible from outside and inside the vehicle, technical systems and storage compartments
- Reinforced galvanised steel frame
- GRP sub-floor
- ABS side skirts
- Garage with low floor, non-slip coating, lighting, heating and rails with load hooks that can be repositioned
- Garage with maximum payload 250 kg depending on configuration and actual load in use
- Power socket in the garage
- Garage with double external access door, with gas pistons and double latching locks and centralised control
- Garage floor with water drain and central reinforcement in non-slip aluminium
- Garage with light switches on both sides
- Open garage doors sensors
- Entrance with integrated step
- Entrance with electrical step

- Electric step sensor with dashboard control
- Courtesy handle in the entrance area
- Premium XL living space door with centralised closure, remote control, window, blind, storage compartment and mosquito net
- Living area door with gas shock absorber
- Windows with frame, flat window pane, blind and mosquito net
- External LED light
- Gas cylinder compartment in a lowered position

KITCHEN

- Scratch and fingerprint resistant kitchen and table tops
- Indirect lighting under kitchen top
- Additional folding kitchen worktop
- Chrome double stainless steel sink on Ecovip 3010/3110, 3019/3119, 4009/4119, 4012/4112
- Multifunctional sink cover (chopping board)
- 3-burner stove
- Refrigerator with automatic energy source selection (AES)
- Automatic soft-close drawers
- 230 V outlet in kitchen
- Kitchen and living room window frame covering
- Glass protection panels for kitchen walls
- 40 x 40 cm roof-light in kitchen
- Extractor hood
- Metal kitchen and bathroom fittings

BATHROOM/SHOWER

- Removable toilet cassette (antifreeze)
- Roof-light in bathroom
- Vario-bathroom with integrated separable maxi shower
- Bathroom door also to be used as a separation for the centre of the vehicle (depending on model)
- Separate shower
- Sliding rear doors (depending on model)
- Mirrored bathroom wall units
- 230 V outlet in bathroom

SYSTEMS

- 100% LED lighting over and under wall units
- Lighting with multiple controls
- Adjustable reading lights complete with USB sockets
- Night-time Lighting
- Gas combi heating with heat distribution throughout the interior, including rear garage and driver's cabin
- Heating with programmable digital control panel
- Heated double floor
- Digital control panel with colour display
- Automatic 20 A battery charger
- CI-BUS electrical system
- Compartment for two service batteries
- USB sockets for power supply and charging of mobile devices
- Gas compartment for two cylinders
- Gas system with anti-crash sensor
- Heated water tank inside the double-floor - easily accessible for cleaning and inspection
- Pressure water pump with expansion tank in protected and heated room accessible from the rear garage
- Heated waste water tank inside the double-floor - easily accessible for cleaning and inspection
- Exhaust pipes with anti-odour siphons, recovery tank complete with external vent
- Waste water tank electric drain valve

INTERIOR & COMFORT

- Single living area level flooring without stairs to rear bedroom
- Insulated/upholstered ceiling
- Rear bedroom walls covered in faux-leather
- Furniture available in two designs: "Rovere Moka" (S), "Pero Toscano" (O)
- Anti-condensation walls and ventilation in the furniture for an ideal spread of the heat
- Height-adjustable living room headrests
- Ergonomic living room cushions with removable covers, seats, backrests and decoration cushions that can be arranged as desired
- "Parma" upholstery
- "Toscana" backrests
- Ergonomic table with moving top and easy handling.

- Maxi panoramic roof-light above the lounge
- Beds with wooden staves
- Back "Ergonomy" high comfort, anti-mite, breathable mattresses with machine washable stretch lining
- Design rear headboard
- Wardrobe cabinet with pull-out track
- Wardrobes with integrated lighting, to be switched on independently
- TV compartment in living room for LCD/LED screens up to 32"
- TV compartment in living room with peninsula and indirect lighting
- Shoe compartment in the entrance area

- Storage space in the seating area with access to the double floor

- Setting for roof-light with electric ventilator in bathroom /kitchen
- Provision for radio

STANDARD SETTINGS FOR:

- TV preparation with power supply and aerial cable
- TV in rear area
- Set-up for coupling
- Set-up for satellite aerial
- Internal wall unit-roof wiring passage
- Setting for additional clean water tank with level reading
- Setting for rear parking sensors

ECOVIP LOW-PROFILES | MOTORHOMES ADDITIONAL EQUIPMENT FOR EACH RANGE

LOW-PROFILES



- Electric windows in cab
- Bodywork and bumpers painted in same colour
- Height-adjustable swivel cab seats with armrests, backrests and fabrics matched to the living area
- Perfectly integrated driver's cab with design elements and faux leather upholstery, direct and indirect lighting and side storage cupboards
- Continuous GRP front with heated and insulated living area / driver's cab connection
- Cab with integrated Skyview
- Opening Skyview

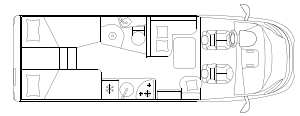
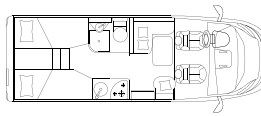
MOTORHOMES



- Descending rear-view mirrors, granturismo bus type, complete with double lens with wide angle function, heating and electrical adjustment, radio antenna integrated
- LED DRL (daytime running lights)
- Driver's door with electric windows
- Driver's door with double locking and clearance lights
- Insulated and heated cabin
- Height-adjustable swivel cab seats with armrests, integrated seat belts and fabrics matched to the living area
- Loud speakers in driver's cab
- One-piece GRP front with panoramic windshield
- Perimeter heating of driver's cab
- Cab interior lining in faux leather
- Drop-down bed completely integrated

- in the wall unit line, with slatted frame, high quality mattress, courtesy awning, adjustable reading lights, USB sockets for charging mobile devices, roof portholes, dedicated storage compartment, heating, internal separation curtain for privacy and multi-way lighting system to control lights even from the bed
- Space under drop-down bed complete with wall units, direct and indirect dedicated lighting, faux-leather padding, double hooking safety stop system with convenient central release

ECOVIP LOW-PROFILES OVERVIEW OF ALL MODELS



MODELS

L 2009

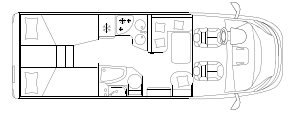
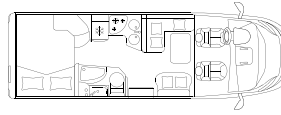
L 3009

Standard chassis		Fiat Ducato 35 Light	Fiat Ducato 35 Light
Engine displacement / maximum power	cc / kW (hp)	2184 / 88 (120)	2184 / 88 (120)
External length / width / height ^D	cm	659 / 225 / 296	699 / 225 / 296
Internal width / height	cm	212 / 205	212 / 205
Wheelbase	mm	3.450	3.800
Mass in running order ^F	kg	2.868	2.956
Technically permissible maximum laden mass	kg	3.500 (S) 3.650 (O)	3.500 (S) 3.650 (O)
Technically permissible maximum towable mass ^E	kg	2.000	2.000
Type-approved seats / Berths ^A		4 (S) 5 (O) / 2 (S) + 1 (O) + 1 (O)	4 (S) 5 (O) / 2 (S) + 2 (O) + 1 (O)
Wall / roof / double floor (thickness)	mm	34 / 38 / 42+10	34 / 38 / 42+10
Double floor height (max / min)	mm	300 - 160	300 - 160
Windows		4 (S) + 1 (O)	4 (S) + 1 (O)
70 x 50 cm panoramic roof-light in living area ^L		S	S
40 x 40 cm roof-light in sleeping area		S	S
Garage dimensions (W x H x L)	cm	212x124x121 / 102	212x124x121 / 102
Right hatch / left hatch (W x H)	cm	95x115 / 51x80	95x115 / 51x80
Maximum fresh water tank capacity depending on configuration and actual load	l	100 + 20	100 + 20
Maximum waste water tank capacity depending on configuration and actual load	l	100	100
Swivel toilet with removable tank (antifreeze) ^N	l	19	18
Face-to-face living room with folding extendable table	cm	-	-
Rear right side bed / rear left side bed	cm	197x82 / 185x82	197x82 / 192x82
Double rear bed	cm	(O)	(O)
Rear double bed electrically adjustable height	cm	-	-
Dinette bed	cm	188x90 45 (O)	188x110 45 (O)
Electric-powered drop-down bed ^{opt I}	cm	186x90	186x121/100
Refrigerator	l	106	140
Hot air channeled heating system	kW	6	6
Water heating system and heat exchanger in motion	kW	(O) 6	(O) 6
12 V sockets - 230 V sockets - USB socket - TV sockets in living room - rear bedroom		2-4-(1+2) - 1-1	2-5-(1+2) - 1-1
Gas cylinder compartment	kg	2x11	2x11

OPTIONAL

Optional Chassis		Fiat Ducato 43 Heavy	Fiat Ducato 43 Heavy
Maximum power	kW (hp)	103 (140) 117 (160) 130 (180)	103 (140) 117 (160) 130 (180)
Mass in running order ^F	kg	2.908	2.996
Technically permissible maximum laden mass ^B	kg	4.250 (S) 4.400 (O)	4.250 (S) 4.400 (O)
Technically permissible maximum towable mass ^E	kg	2000	2000
Type-approved seats ^A		4 (S) 5 (O)	4 (S) 5 (O)

ECOVIP LOW-PROFILES OVERVIEW OF ALL MODELS



MODELS

L 3010

L 3019

Standard chassis		Fiat Ducato 35 Light	Fiat Ducato 35 Light
Engine displacement / maximum power	cc / kW (hp)	2184 / 88 (120)	2184 / 88 (120)
External length / width / height ^D	cm	699 / 225 / 296	699 / 225 / 296
Internal width / height	cm	212 / 205	212 / 205
Wheelbase	mm	4.035	3.800
Mass in running order ^F	kg	3.041	2.966
Technically permissible maximum laden mass	kg	3.500 (S) 3.650 (O)	3.500 (S) 3.650 (O)
Technically permissible maximum towable mass ^E	kg	2.000	2.000
Type-approved seats / Berths ^A		4 (S) 5 (O) / 2 (S) + 2 (O) + 1 (O)	4 (S) 5 (O) / 2 (S) + 2 (O) + 1 (O)
Wall / roof / double floor (thickness)	mm	34 / 38 / 42+10	34 / 38 / 42+10
Double floor height (max / min)	mm	300 - 160	300 - 160
Windows		4 (S) + 1 (O)	5 (S) + 1 (O)
70 x 50 cm panoramic roof-light in living area ^L		S	S
40 x 40 cm roof-light in sleeping area		S	S
Garage dimensions (W x H x L)	cm	212x124x121 / 93	212x124x121 / 97
Right hatch / left hatch (W x H)	cm	95x115 / 51x80	95x115 / 51x80
Maximum fresh water tank capacity depending on configuration and actual load	l	100 + 20	100 + 20
Maximum waste water tank capacity depending on configuration and actual load	l	100	100
Swivel toilet with removable tank (antifreeze) ^N	l	18	18
Face-to-face living room with folding extendable table	cm	-	-
Rear right side bed / rear left side bed	cm	-	193x82 / 191x82
Double rear bed	cm	205x140	(O)
Rear double bed electrically adjustable height	cm	-	-
Dinette bed	cm	188x120/97 (O)	188x100 58 (O)
Electric-powered drop-down bed ^{opt I}	cm	186x139	186x139/109
Refrigerator	l	140	140
Hot air channeled heating system	kW	6	6
Water heating system and heat exchanger in motion	kW	(O) 6	(O) 6
12 V sockets - 230 V sockets - USB socket - TV sockets in living room - rear bedroom		2-4-(1+2) - 1 -1	2-4-(1+2) - 1 -1
Gas cylinder compartment	kg	2x11	2x11

OPTIONAL

Optional Chassis		Fiat Ducato 43 Heavy	Fiat Ducato 43 Heavy
Maximum power	kW (hp)	103 (140) 117 (160) 130 (180)	103 (140) 117 (160) 130 (180)
Mass in running order ^F	kg	3.081	3.006
Technically permissible maximum laden mass ^B	kg	4.250 (S) 4.400 (O)	4.250 (S) 4.400 (O)
Technically permissible maximum towable mass ^E	kg	2000	2000
Type-approved seats ^A		4 (S) 5 (O)	4 (S) 5 (O)

ND | To be defined O | Option S | Standard P | Pack

ECOVIP LOW-PROFILES OVERVIEW OF ALL MODELS



MODELS

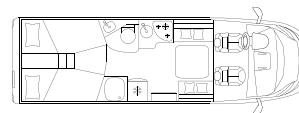
L 3412 DS

Standard chassis		Fiat Ducato 35 Light
Engine displacement /maximum power	cc / kW (hp)	2184 / 88 (120)
External length / width / height ^D	cm	720 / 225 / 296
Internal width / height	cm	212 / 205
Wheelbase	mm	4.035
Mass in running order ^F	kg	3.019
Technically permissible maximum laden mass	kg	3.500 (S) 3.650 (O)
Technically permissible maximum towable mass ^E	kg	2.000
Type-approved seats / Berths ^A		4 (S) / 2 (S) + 2 (O) + 1 (O)
Wall / roof / double floor (thickness)	mm	34 / 38 / 42+10
Double floor height (max / min)	mm	300 - 160
Windows		5 (S) + 1 (O)
70 x 50 cm panoramic roof-light in living area ^L		S
40 x 40 cm roof-light in sleeping area		S
Garage dimensions (W x H x L)	cm	212x123x136 / 123
Right hatch / left hatch (W x H)	cm	95x115 / 51x80
Maximum fresh water tank capacity depending on configuration and actual load	l	100 + 20
Maximum waste water tank capacity depending on configuration and actual load	l	100
Swivel toilet with removable tank (antifreeze) ^N	l	18
Face-to-face living room with folding extendable table	cm	S
Rear right side bed / rear left side bed	cm	-
Double rear bed	cm	-
Rear double bed electrically adjustable height	cm	190x150
Dinette bed	cm	183x70 (O)
Electric-powered drop-down bed ^{opt I}	cm	186x139
Refrigerator	l	140
Hot air channeled heating system	kW	6
Water heating system and heat exchanger in motion	kW	(O) 6
12 V sockets - 230 V sockets - USB socket - TV sockets in living room - rear bedroom		2-4-(1+2) - 1-1
Gas cylinder compartment	kg	2x11

OPTIONAL

Optional Chassis		Fiat Ducato 43 Heavy
Maximum power	kW (hp)	103 (140) 117 (160) 130 (180)
Mass in running order ^F	kg	3.059
Technically permissible maximum laden mass ^B	kg	4.250 (S) 4.400 (O)
Technically permissible maximum towable mass ^E	kg	2000
Type-approved seats ^A		4 (S)

ECOVIP LOW-PROFILES OVERVIEW OF ALL MODELS



MODELS

L 4009

L 4009 DS

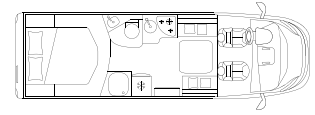
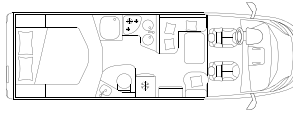
Standard chassis		Fiat Ducato 35 Light	Fiat Ducato 35 Light
Engine displacement / maximum power	cc / kW (hp)	2184 / 88 (120)	2184 / 88 (120)
External length / width / height ^D	cm	740 / 225 / 296	740 / 225 / 296
Internal width / height	cm	212 / 205	212 / 205
Wheelbase	mm	4.035	4.035
Mass in running order ^F	kg	3.040	3.054
Technically permissible maximum laden mass	kg	3.500 (S) 3.650 (O)	3.500 (S) 3.650 (O)
Technically permissible maximum towable mass ^E	kg	2.000	2.000
Type-approved seats / Berths ^A		4 (S) 5 (O) / 2 (S) + 2 (O) + 1 (O)	4 (S) / 2 (S) + 2 (O) + 1 (O)
Wall / roof / double floor (thickness)	mm	34 / 38 / 42+10	34 / 38 / 42+10
Double floor height (max / min)	mm	300 - 160	300 - 160
Windows		5 (S) + 1 (O)	5 (S) + 1 (O)
70 x 50 cm panoramic roof-light in living area ^L		S	S
40 x 40 cm roof-light in sleeping area		S	S
Garage dimensions (W x H x L)	cm	212x124x121 / 95	212x124x121 / 95
Right hatch / left hatch (W x H)	cm	95x115 / 51x80	95x115 / 51x80
Maximum fresh water tank capacity depending on configuration and actual load	l	100 + 20	100 + 20
Maximum waste water tank capacity depending on configuration and actual load	l	100	100
Swivel toilet with removable tank (antifreeze) ^N	l	18	18
Face-to-face living room with folding extendable table	cm	-	S
Rear right side bed / rear left side bed	cm	206x82 / 202x82	202x82 / 206x82
Double rear bed	cm	(O)	(O)
Rear double bed electrically adjustable height	cm	-	-
Dinette bed	cm	188x120 58 (O)	183x80 (O)
Electric-powered drop-down bed ^{opt I}	cm	186x139/112	186x139
Refrigerator	l	153	153
Hot air channeled heating system	kW	6	6
Water heating system and heat exchanger in motion	kW	(O) 6	(O) 6
12 V sockets - 230 V sockets - USB socket - TV sockets in living room - rear bedroom		2-4-(1+2) - 1 -1	2-4-(1+2) - 1 -1
Gas cylinder compartment	kg	2x11	2x11

OPTIONAL

Optional Chassis		Fiat Ducato 43 Heavy	Fiat Ducato 43 Heavy
Maximum power	kW (hp)	103 (140) 117 (160) 130 (180)	103 (140) 117 (160) 130 (180)
Mass in running order ^F	kg	3.080	3.094
Technically permissible maximum laden mass ^B	kg	4.250 (S) 4.400 (O)	4.250 (S) 4.400 (O)
Technically permissible maximum towable mass ^E	kg	2000	2000
Type-approved seats ^A		4 (S) 5 (O)	4 (S)

ND | To be defined O | Option S | Standard P | Pack

ECOVIP LOW-PROFILES OVERVIEW OF ALL MODELS



MODELS

L 4012

L 4012 DS

Standard chassis		Fiat Ducato 35 Light	Fiat Ducato 35 Light
Engine displacement / maximum power	cc / kW (hp)	2184 / 88 (120)	2184 / 88 (120)
External length / width / height ^D	cm	740 / 225 / 296	740 / 225 / 296
Internal width / height	cm	212 / 205	212 / 205
Wheelbase	mm	4.035	4.035
Mass in running order ^F	kg	3.053	3.067
Technically permissible maximum laden mass	kg	3.500 (S) 3.650 (O)	3.500 (S) 3.650 (O)
Technically permissible maximum towable mass ^E	kg	2.000	2.000
Type-approved seats / Berths ^A		4 (S) 5 (O) / 2 (S) + 2 (O) + 1 (O)	4 (S) / 2 (S) + 2 (O) + 1 (O)
Wall / roof / double floor (thickness)	mm	34 / 38 / 42+10	34 / 38 / 42+10
Double floor height (max / min)	mm	300 - 160	300 - 160
Windows		5 (S) + 1 (O)	5 (S) + 1 (O)
70 x 50 cm panoramic roof-light in living area ^L		S	S
40 x 40 cm roof-light in sleeping area		S	S
Garage dimensions (W x H x L)	cm	212x123x136 / 123	212x123x136 / 123
Right hatch / left hatch (W x H)	cm	95x115 / 51x80	95x115 / 51x80
Maximum fresh water tank capacity depending on configuration and actual load	l	100 + 20	100 + 20
Maximum waste water tank capacity depending on configuration and actual load	l	100	100
Swivel toilet with removable tank (antifreeze) ^N	l	18	18
Face-to-face living room with folding extendable table	cm	-	S
Rear right side bed / rear left side bed	cm	-	-
Double rear bed	cm	-	-
Rear double bed electrically adjustable height	cm	190x150	190x150
Dinette bed	cm	188x120 58 (O)	183x80 (O)
Electric-powered drop-down bed ^{opt 1}	cm	186x139/112	186x139
Refrigerator	l	153	153
Hot air channeled heating system	kW	6	6
Water heating system and heat exchanger in motion	kW	(O) 6	(O) 6
12 V sockets - 230 V sockets - USB socket - TV sockets in living room - rear bedroom		2-4-(1+2) - 1-1	2-4-(1+2) - 1-1
Gas cylinder compartment	kg	2x11	2x11

OPTIONAL

Optional Chassis		Fiat Ducato 43 Heavy	Fiat Ducato 43 Heavy
Maximum power	kW (hp)	103 (140) 117 (160) 130 (180)	103 (140) 117 (160) 130 (180)
Mass in running order ^F	kg	3.093	3.107
Technically permissible maximum laden mass ^B	kg	4.250 (S) 4.400 (O)	4.250 (S) 4.400 (O)
Technically permissible maximum towable mass ^E	kg	2000	2000
Type-approved seats ^A		4 (S) 5 (O)	4 (S)

ND | To be defined

O | Option

S | Standard

P | Pack



ECOVIP LOW-PROFILES PACKS

COMFORT PACK ECOVIP **PEA / PEB** **LOW-PROFILES** **+ 16.1 / 11.1 KG**

- Driver's cabin carpet and cabin entrance mat
- Bathroom window (except Ecovip L 2009)
- Pleated interior cab blinds (for windscreen and side windows)
- Dimmable lights
- Wooden footboard for shower tray
- Reversing camera preparation

CHASSIS DESIGN **PDN** **PACK BASIC** **+ 1 KG**

- Glossy black engine grille
- Leather-covered steering wheel and gear knob, original Fiat
- Headlights with black design surround
- Dashboard in „Techno Trim“ version

MULTIMEDIA PACK **MZ1** **ECOVIP + KREOS** **+ 7.8 KG**

- Multimedia System 9“, DAB car radio, Touchscreen, Navigation and map update 3 years, speakers, rear view camera

CHASSIS **PGA** **PACK** **+ 6.4 KG**

- Electric and heated door mirrors
- Steering wheel radio controls
- DAB radio antenna
- DAB car radio and speaker arrangement in cab
- Traction +, Hill Descent

**ALARM
PACK**

**S1A
+ 4.2 KG**

-
- Front parking sensors (4 pcs.)
 - Rear parking sensors (4 pcs.)
 - Volumetric-perimeter anti-theft device (incl. garage doors and hatches), remote control integrated in engine key
 - Anti-theft sensors for windows (6 pieces)

**DRIVING ASSISTANCE
SYSTEMS PACK**

**2PP
+ 0.2 KG**

-
- Autonomous Emergency Brake Control with Pedestrian and Cyclist detection, Lane Control (Lane Support System), Rain and Dusk Sensor , Traffic Sign Recognition + High Beam Recognition

ECOVIP LOW-PROFILES ACCESSORIES

Code No.	Accessories	Price £*	Kg	L 2009
CHASSIS AND CAB				
2043605	Increased weight 3,650 kg, Fiat Light chassis	£ 250	0.0 kg	O
2734600	Fiat Ducato Heavy Chassis 4,250 kg (possible only with 140 BHP)	£ 1,300	40.0 kg	O
2734602	Fiat Heavy Chassis 4,400 kg (possible only with 160 BHP or 180 BHP)	£ 1,560	40.0 kg	O
611+457	"Aluminium Grey" metallic cab paint (10)	£ 1,090	0.0 kg	O
3057312	Fiat 2.2 Engine, 140 BHP, Euro 6d Final (Extra charge compared to 120 BHP)	£ 820	0.0 kg	O
3056219	Fiat 2.2 Engine, 160 BHP, Euro 6d Final (Extra charge compared to 120 BHP)	£ 2,590	15.0 kg	O
3056223	Fiat 2.2 Engine, 180 BHP, Euro 6d Final (Extra charge compared to 120 BHP)	£ 4,490	15.0 kg	O
2JH-3	Automatic transmission for 140 BHP engine - Light chassis	£ 3,020	48.0 kg	O
2JH-4	Automatic transmission for 160 BHP and 180 BHP engine - Light chassis	£ 3,020	33.0 kg	O
AT9-HE140	140 BHP Automatic gearbox for Heavy Chassis	£ 3,020	18.0 kg	O
AT9H160180	160 BHP and 180BHP Automatic gearbox for Heavy Chassis	£ 3,020	3.0 kg	O
2PZ	U-Connect 10" Radio NAV Touch HD Display - Fiat original part	£ 1,750	1.9 kg	O
2QF	Full-Digital Cluster - Fiat Fiat original part	£ 480	0.3 kg	O
320	Steering wheel and gear lever in real leather, Fiat original part	£ 280	0.3 kg	O
5QD	Engine battery cut off switch, Fiat original part	£ 170	0.0 kg	O
3065128	Diesel tank 90 l, Fiat chassis	£ 90	27.0 kg	O
FO7	Laika logo stickers for Fiat wheel covers or alloy wheels (4 pieces)	£ 40	0.1 kg	O
431-2	16" Alloy wheels, Fiat original parts, 35 Light chassis (4 pieces)	£ 480	0.0 kg	O
0R2-2	16" Alloy wheels black matte, Fiat original parts, 35 Light chassis (4 pieces)	£ 590	0.0 kg	O
1LR	16" Alloy wheels Fiat original parts, Heavy chassis (4 pieces)	£ 480	0.0 kg	O
LPZ	Fog lights with cornering function, Fiat original part	£ 260	2.0 kg	O
9WE	Full LED headlights, Fiat original part	£ 1,590	0.0 kg	O
205	Programmable Diesel heating, Fiat original part	£ 1,060	6.0 kg	O
52X	Provision for gasoline heating on Fiat chassis	£ 100	3.5 kg	O
09U	Heated cab seats, Fiat original part (2 pieces - only in combination with Udine and Firenze upholstery)	£ 650	1.0 kg	O
67333	Automatic cab air conditioning, Fiat original part	£ 440	0.0 kg	O
2281023	Removable fifth seat (check whether possible without extra load)	£ 650	8.0 kg	O
RFX	Wireless charger for mobile phones - Fiat original part	£ 430	0.0 kg	O
365	TPMS tyre pressure checking system	£ 230	0.5 kg	O
JKU	230 V socket in driver's cab, Fiat original part	£ 290	0.1 kg	O
3YL	Gloss black underride guard, Fiat original part	£ 90	0.0 kg	O

ECOVIP LOW-PROFILES ACCESSORIES

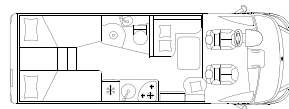
Code No.	Accessories	Price £*	Kg	L 2009
INTERIOR ACCESSORIES				
FM2	Isofix fasteners (2 pieces)	£ 370	11.0 kg	O
F04	Electric drop-down bed above the lounge ⁽³⁾	£ 1,420	40.0 kg	O
FC5	Bed conversion from single beds to double bed (with ladder)	£ 310	12.0 kg	O
3105529	Electric height adjustable rear bed	£ 1,420	25.0 kg	-
2843590	Seating group bed (single bed) and table with telescopic base	£ 320	10.0 kg	O
X8	Furniture design "Pero Toscano"	£ 0	0.0 kg	O
TT4	Upholstery Siena	£ 260	0.0 kg	O
EE	Upholstery Firenze, leatherette	£ 620	0.0 kg	O
TT2	Upholstery Udine, leatherette	£ 620	0.0 kg	O
TT5	Upholstery Milano, real leather	£ 2,640	0.0 kg	O
T07	Cushions Lazio	£ 380	0.0 kg	O
T04	Cushions Liguria	£ 380	0.0 kg	O
T16	Cushions Roma	£ 380	0.0 kg	O
T10	Cushions Trentino	£ 420	0.0 kg	O
T03	Cushions Umbria	£ 420	0.0 kg	O
T05	Cushions Veneto	£ 420	0.0 kg	O
T17	Cushions Siena	£ 380	0.0 kg	O
T19	Cushions Firenze, leatherette	£ 380	0.0 kg	O
T02	Cushions Sardegna, leatherette	£ 380	0.0 kg	O
T18	Cushions Milano, real leather	£ 660	0.0 kg	O
146	32" TV LED DVD, with decoder and adjustable TV stand	£ 1,310	7.0 kg	O
FM8	32" TV LED DVD, with decoder and adjustable TV stand at rear area	£ 1,310	7.0 kg	
FD1	Adjustable TV stand	£ 160	3.0 kg	O
D42	Combi Diesel Heating (only in conjunction with Diesel heating, art. 52X only for Kosmo Campervans, standard for Ecovip Campervans)	£ 620	1.0 kg	O
2471995	Heating Combi 6 E	£ 500	3.0 kg	O
ALD2	Hot water heating system (incl. motor heat exchanger)	£ 3,760	47.0 kg	O
FL3	Heating (Diesel auxiliary heating) 2000S	£ 1,900	17.5 kg	O
FH6	Combi Diesel E heater (only in conjunction with Diesel heater device, Art. 52X)	£ 900	5.0 kg	O
F58	Remote control of the heating via smartphone ⁽⁶⁾	£ 450	1.0 kg	O
2333651	Table with folding top and telescopic leg (bed in lounge not possible)	£ 270	10.0 kg	O
F07	Gas oven (installation above the fridge)	£ 590	20.0 kg	-
FO2	Kitchen version Grand Chef, 3-burner stove, integrated gas oven with grill	£ 820	8.0 kg	-
2799662	Microwave oven (only possible in combination with the "Grand Chef" kitchen version)	£ 420	2.5 kg	-
FL5	Preparation for a second living area battery	£ 100	0.5 kg	O
FL4	Additional battery charger 20 A	£ 250	1.0 kg	O
FR6	Inverter 350W	£ 230	1.7 kg	O
FL2	Gas detection system	£ 210	2.0 kg	O

ECOVIP LOW-PROFILES ACCESSORIES

Code No.	Accessories	Price £*	Kg	L 2009
EXTERIOR ACCESSORIES				
2059062	Electric roof fan in kitchen	£ 230	2.0 kg	O
2390009	Electric roof fan in shower	£ 230	2.0 kg	O
2160664	External shower (hot and cold water)	£ 210	2.0 kg	O
3259855	Tow hitch	£ 1,580	78.0 kg	O
3076985	Gas regulator with automatic switchover (DuoControl) Series: MonoControl	£ 230	0.5 kg	O
3076983	Gas regulator with automatic switchover + defrosting device and remote control (DuoControl + EisEx) Series: MonoControl	£ 320	1.5 kg	O
F44	External Gas socket	£ 220	1.0 kg	O
37831	Laika foldable bicycle carrier for 3 bikes	£ 370	9.3 kg	O
37832	Bicycle rail for 4th bicycle	£ 90	1.0 kg	O
3242620	Awning Laika, 3.7 m, white housing	£ 840	33.5 kg	O
3231890	Awning Laika, 4 m, white housing	£ 920	36.5 kg	-
2065671	Awning Laika, 4.5 m, white housing	£ 960	41.5 kg	-
AN3	Satellite aerial 80 HD	£ 2,180	17.0 kg	O
FL6	120 W Solar panel with control and fixing brackets	£ 770	15.5 kg	O
FN3	Additional fresh water tank 67l, for summer operation	£ 270	15.0 kg	O
2851533	Stabilising jacks	£ 430	7.5 kg	O
2818306	2200 W Air conditioning in living room	£ 2,250	34.0 kg	O

ECOVIP MOTORHOMES

OVERVIEW OF ALL MODELS



MODELS

H 2109

H 3109

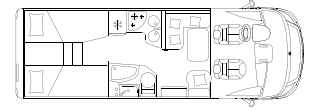
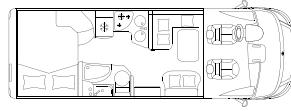
Standard chassis		Fiat Ducato 35 Light	Fiat Ducato 35 Light
Engine displacement / maximum power	cc / kW (hp)	2184 / 88 (120)	2184 / 88 (120)
External length / width / height ^D	cm	659 / 225 / 296	699 / 225 / 296
Internal width / height	cm	212 / 205	212 / 205
Wheelbase	mm	3.450	3.800
Mass in running order ^D	kg	2.932	3.036
Technically permissible maximum laden mass	kg	3.500 (S) 3.650 (O)	3.500 (S) 3.650 (O)
Technically permissible maximum towable mass ^E	kg	2.000	2.000
Type-approved seats / Berths ^A		4 (S) 5 (O) / 4 (S) + 1 (O)	4 (S) 5 (O) / 4 (S) + 1 (O)
Wall / roof / double floor (thickness)	mm	34 / 38 / 42+10	34 / 38 / 42+10
Double floor height (max / min)	mm	300 - 160	300 - 160
Windows		4 (S) + 1 (O)	4 (S) + 1 (O)
70 x 50 cm panoramic roof-light in living area		S	S
40 x 40 cm roof-light in sleeping area		S	S
Garage dimensions (W x H x L)	cm	212x124x121 / 102	212 X 124 X 121 / 102
Right hatch / left hatch (W x H)	cm	95x115 / 51x80	95x115 / 51x80
Maximum fresh water tank capacity depending on configuration and actual load	l	100 + 20	100 + 20
Maximum waste water tank capacity depending on configuration and actual load	l	100	100
Swivel toilet with removable tank (antifreeze) ^N	l	19	18
Face-to-face living room with folding extendable table	cm	-	-
Rear right side bed / rear left side bed	cm	197x82 / 185x82	197x82 / 192x82
Double rear bed	cm	(O)	(O)
Rear double bed electrically adjustable height	cm	-	-
Dinette bed	cm	188x90 45 (O)	188x110 45 (O)
Drop-down bed	cm	190x145	190x145
Refrigerator	l	106	140
Hot air channeled heating system	kW	6	6
Water heating system and heat exchanger in motion	kW	(O) 6	(O) 6
12 V sockets - 230 V sockets - USB socket - TV sockets in living room - rear bedroom		2-4-(1+2) - 1-1	2-5-(1+2) - 1-1
Gas cylinder compartment	kg	2x11	2x11

OPTIONAL

Optional Chassis		Fiat Ducato 43 Heavy	Fiat Ducato 43 Heavy
Maximum power	kW (hp)	103 (140) 117 (160) 130 (180)	103 (140) 117 (160) 130 (180)
Mass in running order ^F	kg	2.972	3.076
Technically permissible maximum laden mass ^B	kg	4.250 (S) 4.400 (O)	4.250 (S) 4.400 (O)
Technically permissible maximum towable mass ^E	kg	2000	2000
Type-approved seats ^A		4 (S) 5 (O)	4 (S) 5 (O)

ECOVIP MOTORHOMES

OVERVIEW OF ALL MODELS



MODELS

H 3110

H 3119

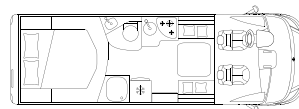
Standard chassis		Fiat Ducato 35 Light	Fiat Ducato 35 Light
Engine displacement / maximum power	cc / kW (hp)	2184 / 88 (120)	2184 / 88 (120)
External length / width / height ^D	cm	699 / 225 / 296	699 / 225 / 296
Internal width / height	cm	212 / 205	212 / 205
Wheelbase	mm	4.035	3.800
Mass in running order ^D	kg	3.121	3.035
Technically permissible maximum laden mass	kg	3.500 (S) 3.650 (O)	3.500 (S) 3.650 (O)
Technically permissible maximum towable mass ^E	kg	2.000	2.000
Type-approved seats / Berths ^A		4 (S) 5 (O) / 4 (S) + 1 (O)	4 (S) 5 (O) / 4 (S) + 1 (O)
Wall / roof / double floor (thickness)	mm	34 / 38 / 42+10	34 / 38 / 42+10
Double floor height (max / min)	mm	300 - 160	300 - 160
Windows		4 (S) + 1 (O)	5 (S) + 1 (O)
70 x 50 cm panoramic roof-light in living area		S	S
40 x 40 cm roof-light in sleeping area		S	S
Garage dimensions (W x H x L)	cm	212x124x121 / 93	212X124X121 / 97
Right hatch / left hatch (W x H)	cm	95x115 / 51x80	95x115 / 51x80
Maximum fresh water tank capacity depending on configuration and actual load	l	100 + 20	100 + 20
Maximum waste water tank capacity depending on configuration and actual load	l	100	100
Swivel toilet with removable tank (antifreeze) ^N	l	18	18
Face-to-face living room with folding extendable table	cm	-	-
Rear right side bed / rear left side bed	cm	-	193x82 / 191x82
Double rear bed	cm	205x140	(O)
Rear double bed electrically adjustable height	cm	-	-
Dinette bed	cm	188x120/97 (O)	188x100 58 (O)
Drop-down bed	cm	190x145	190x145
Refrigerator	l	140	140
Hot air channeled heating system	kW	6	6
Water heating system and heat exchanger in motion	kW	(O) 6	(O) 6
12 V sockets - 230 V sockets - USB socket - TV sockets in living room - rear bedroom		2-4-(1+2) - 1 -1	2-4-(1+2) - 1 -1
Gas cylinder compartment	kg	2x11	2x11

OPTIONAL

Optional Chassis		Fiat Ducato 43 Heavy	Fiat Ducato 43 Heavy
Maximum power	kW (hp)	103 (140) 117 (160) 130 (180)	103 (140) 117 (160) 130 (180)
Mass in running order ^F	kg	3.161	3.075
Technically permissible maximum laden mass ^B	kg	4.250 (S) 4.400 (O)	4.250 (S) 4.400 (O)
Technically permissible maximum towable mass ^E	kg	2000	2000
Type-approved seats ^A		4 (S) 5 (O)	4 (S) 5 (O)

ND | To be defined O | Option S | Standard P | Pack

ECOVIP MOTORHOMES OVERVIEW OF ALL MODELS



MODELS

H 3512 DS

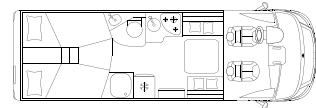
Standard chassis		Fiat Ducato 35 Light
Engine displacement /maximum power	cc / kW (hp)	2184 / 88 (120)
External length / width / height ^D	cm	720 / 225 / 296
Internal width / height	cm	212 / 205
Wheelbase	mm	4.035
Mass in running order ^D	kg	3.087
Technically permissible maximum laden mass	kg	3.500 (S) 3.650 (O)
Technically permissible maximum towable mass ^E	kg	2.000
Type-approved seats / Berths ^A		4 (S) / 4 (S) + 1 (O)
Wall / roof / double floor (thickness)	mm	34 / 38 / 42+10
Double floor height (max / min)	mm	300 - 160
Windows		5 (S) + 1 (O)
70 x 50 cm panoramic roof-light in living area		S
40 x 40 cm roof-light in sleeping area		S
Garage dimensions (W x H x L)	cm	212x123x136 / 123
Right hatch / left hatch (W x H)	cm	95x115 / 51x80
Maximum fresh water tank capacity depending on configuration and actual load	l	100 + 20
Maximum waste water tank capacity depending on configuration and actual load	l	100
Swivel toilet with removable tank (antifreeze) ^N	l	18
Face-to-face living room with folding extendable table	cm	S
Rear right side bed / rear left side bed	cm	-
Double rear bed	cm	-
Rear double bed electrically adjustable height	cm	190x150
Dinette bed	cm	183x70 (O)
Drop-down bed	cm	190x145
Refrigerator	l	140
Hot air channeled heating system	kW	6
Water heating system and heat exchanger in motion	kW	(O) 6
12 V sockets - 230 V sockets - USB socket - TV sockets in living room - rear bedroom		2-4-(1+2) - 1-1
Gas cylinder compartment	kg	2x11

OPTIONAL

Optional Chassis		Fiat Ducato 43 Heavy
Maximum power	kW (hp)	103 (140) 117 (160) 130 (180)
Mass in running order ^F	kg	3.127
Technically permissible maximum laden mass ^B	kg	4.250 (S) 4.400 (O)
Technically permissible maximum towable mass ^E	kg	2000
Type-approved seats ^A		4 (S)

ECOVIP MOTORHOMES

OVERVIEW OF ALL MODELS



MODELS

H 4109

H 4109 DS

Standard chassis		Fiat Ducato 35 Light	Fiat Ducato 35 Light
Engine displacement / maximum power	cc / kW (hp)	2184 / 88 (120)	2184 / 88 (120)
External length / width / height ^D	cm	740 / 225 / 296	740 / 225 / 296
Internal width / height	cm	212 / 205	212 / 205
Wheelbase	mm	4.035	4.035
Mass in running order ^D	kg	3.095	3.114
Technically permissible maximum laden mass	kg	3.500 (S) 3.650 (O)	3.500 (S) 3.650 (O)
Technically permissible maximum towable mass ^E	kg	2.000	2.000
Type-approved seats / Berths ^A		4 (S) 5 (O) / 4 (S) + 1 (O)	4 (S) / 4 (S) + 1 (O)
Wall / roof / double floor (thickness)	mm	34 / 38 / 42+10	34 / 38 / 42+10
Double floor height (max / min)	mm	300 - 160	300 - 160
Windows		5 (S) + 1 (O)	5 (S) + 1 (O)
70 x 50 cm panoramic roof-light in living area		S	S
40 x 40 cm roof-light in sleeping area		S	S
Garage dimensions (W x H x L)	cm	212x124x121 / 95	212x124x121 / 95
Right hatch / left hatch (W x H)	cm	95x115 / 51x80	95x115 / 51x80
Maximum fresh water tank capacity depending on configuration and actual load	l	100 + 20	100 + 20
Maximum waste water tank capacity depending on configuration and actual load	l	100	100 l
Swivel toilet with removable tank (antifreeze) ^N	l	18	18
Face-to-face living room with folding extendable table	cm	-	S
Rear right side bed / rear left side bed	cm	206x82 / 202x82	202x82 / 206x82
Double rear bed	cm	(O)	(O)
Rear double bed electrically adjustable height	cm	-	-
Dinette bed	cm	188x120 58 (O)	183x80 (O)
Drop-down bed	cm	190x145	190x145
Refrigerator	l	153	153
Hot air channeled heating system	kW	6	6
Water heating system and heat exchanger in motion	kW	(O) 6	(O) 6
12 V sockets - 230 V sockets - USB socket - TV sockets in living room - rear bedroom		2-4-(1+2) - 1-1	2-4-(1+2) - 1-1
Gas cylinder compartment	kg	2x11	2x11

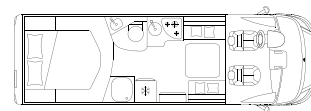
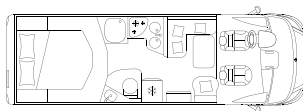
OPTIONAL

Optional Chassis		Fiat Ducato 43 Heavy	Fiat Ducato 43 Heavy
Maximum power	kW (hp)	103 (140) 117 (160) 130 (180)	103 (140) 117 (160) 130 (180)
Mass in running order ^F	kg	3.135	3.154
Technically permissible maximum laden mass ^B	kg	4.250 (S) 4.400 (O)	4.250 (S) 4.400 (O)
Technically permissible maximum towable mass ^E	kg	2000	2000
Type-approved seats ^A		4 (S) 5 (O)	4 (S)

ND | To be defined O | Option S | Standard P | Pack

ECOVIP MOTORHOMES

OVERVIEW OF ALL MODELS



MODELS

H 4112

H 4112 DS

Standard chassis		Fiat Ducato 35 Light	Fiat Ducato 35 Light
Engine displacement / maximum power	cc / kW (hp)	2184 / 88 (120)	2184 / 88 (120)
External length / width / height ^D	cm	740 / 225 / 296	740 / 225 / 296
Internal width / height	cm	212 / 205	212 / 205
Wheelbase	mm	4.035	4.035
Mass in running order ^D	kg	3.113	3.129
Technically permissible maximum laden mass	kg	3.500 (S) 3.650 (O)	3.500 (S) 3.650 (O)
Technically permissible maximum towable mass ^E	kg	2.000	2.000
Type-approved seats / Berths ^A		4 (S) 5 (O) / 4 (S) + 1 (O)	4 (S) / 4 (S) + 1 (O)
Wall / roof / double floor (thickness)	mm	34 / 38 / 42+10	34 / 38 / 42+10
Double floor height (max / min)	mm	300 - 160	300 - 160
Windows		5 (S) + 1 (O)	5 (S) + 1 (O)
70 x 50 cm panoramic roof-light in living area		S	S
40 x 40 cm roof-light in sleeping area		S	S
Garage dimensions (W x H x L)	cm	212x123x136 / 123	212x123x136 / 123
Right hatch / left hatch (W x H)	cm	95x115 / 51x80	95x115 / 51x80
Maximum fresh water tank capacity depending on configuration and actual load	l	100 + 20	100 + 20
Maximum waste water tank capacity depending on configuration and actual load	l	100	100
Swivel toilet with removable tank (antifreeze) ^N	l	18	18
Face-to-face living room with folding extendable table	cm	-	S
Rear right side bed / rear left side bed	cm	-	-
Double rear bed	cm	-	-
Rear double bed electrically adjustable height	cm	190x150	190x150
Dinette bed	cm	188x120 58 (O)	183x80 (O)
Drop-down bed	cm	190x145	190x145
Refrigerator	l	153	153
Hot air channeled heating system	kW	6	6
Water heating system and heat exchanger in motion	kW	(O) 6	(O) 6
12 V sockets - 230 V sockets - USB socket - TV sockets in living room - rear bedroom		2-4-(1+2) - 1-1	2-4-(1+2) - 1-1
Gas cylinder compartment	kg	2x11	2x11

OPTIONAL

Optional Chassis		Fiat Ducato 43 Heavy	Fiat Ducato 43 Heavy
Maximum power	kW (hp)	103 (140) 117 (160) 130 (180)	103 (140) 117 (160) 130 (180)
Mass in running order ^F	kg	3.153	3.169
Technically permissible maximum laden mass ^B	kg	4.250 (S) 4.400 (O)	4.250 (S) 4.400 (O)
Technically permissible maximum towable mass ^E	kg	2000	2000
Type-approved seats ^A		4 (S) 5 (O)	4 (S)

ND | To be defined

O | Option

S | Standard

P | Pack



ECOVIP MOTORHOMES PACKS

CHASSIS PACK A-CLASS

HPG
+ 1.3 KG

-
- Steering wheel radio controls
 - Traction+, Hill Descent
 - Leather-wrapped steering wheel and gearstick knob, Fiat original
 - Dashboard in „Techno Trim“ version

MULTIMEDIA PACK ECOVIP + KREOS

MZ1
+ 7.8 KG

-
- Multimedia System 9“, DAB car radio, Touchscreen, Navigation and map update 3 years, speakers, rear view camera

COMFORT PACK ECOVIP A-CLASS

PHE / PHF
+ 16.1 / 11.1 KG

-
- Driver's cabin carpet and cabin entrance mat
 - Bathroom window (except Ecovip H 2109)
 - Pleated interior cab blinds (for windscreen and side windows)
 - Dimmable lights
 - Wooden footboard for shower tray
 - Reversing camera preparation

ALARM PACK

S1A
+ 4.2 KG

-
- Front parking sensors (4 pcs.)
 - Rear parking sensors (4 pcs.)
 - Volumetric-perimeter anti-theft device (incl. garage doors and hatches), remote control integrated in engine key
 - Anti-theft sensors for windows (6 pieces)



ECOVIP MOTORHOMES ACCESSORIES

Code No.	Accessories	Price £ *	Kg	H 2109
CHASSIS AND CAB				
2043605	Increased weight 3,650 kg, Fiat Light chassis	£ 250	0.0 kg	O
2734600	Fiat Ducato Heavy Chassis 4,250 kg (possible only with 140 BHP)	£ 1,300	40.0 kg	O
2734602	Fiat Heavy Chassis 4,400 kg (possible only with 160 BHP or 180 BHP)	£ 1,560	40.0 kg	O
3057312	Fiat 2.2 Engine, 140 BHP, Euro 6d Final (Extra charge compared to 120 BHP)	£ 820	0.0 kg	O
3056219	Fiat 2.2 Engine, 160 BHP, Euro 6d Final (Extra charge compared to 120 BHP)	£ 2,590	15.0 kg	O
3056223	Fiat 2.2 Engine, 180 BHP, Euro 6d Final (Extra charge compared to 120 BHP)	£ 4,490	15.0 kg	O
2JH-3	Automatic transmission for 140 BHP engine - Light chassis	£ 3,020	48.0 kg	O
2JH-4	Automatic transmission for 160 BHP and 180 BHP engine - Light chassis	£ 3,020	33.0 kg	O
AT9-HE140	140 BHP Automatic gearbox for Heavy Chassis	£ 3,020	18.0 kg	O
AT9H160180	160 BHP and 180BHP Automatic gearbox for Heavy Chassis	£ 3,020	3.0 kg	O
2PZ	U-Connect 10" Radio NAV Touch HD Display - Fiat original part	£ 1,750	1.9 kg	O
2QF	Full-Digital Cluster - Fiat Fiat original part	£ 480	0.3 kg	O
320	Steering wheel and gear lever in real leather, Fiat original part	£ 280	0.3 kg	O
5QD	Engine battery cut off switch, Fiat original part	£ 170	0.0 kg	O
3065128	Diesel tank 90 l, Fiat chassis	£ 90	27.0 kg	O
FO7	Laika logo stickers for Fiat wheel covers or alloy wheels (4 pieces)	£ 40	0.1 kg	O
431-2	16" Alloy wheels, Fiat original parts, 35 Light chassis (4 pieces)	£ 480	0.0 kg	O
0R2-2	16" Alloy wheels black matte, Fiat original parts, 35 Light chassis (4 pieces)	£ 590	0.0 kg	O
1LR	16" Alloy wheels Fiat original parts, Heavy chassis (4 pieces)	£ 480	0.0 kg	O
205	Programmable Diesel heating, Fiat original part	£ 1,060	6.0 kg	O
52X	Provision for gasoline heating on Fiat chassis	£ 100	3.5 kg	O
67333	Automatic cab air conditioning, Fiat original part	£ 440	0.0 kg	O
2281023	Removable fifth seat (check whether possible without extra load)	£ 650	8.0 kg	O
LED	LED headlights	£ 1,590	2.0 kg	O
2026176	Fog lights (for A-class vehicles)	£ 380	2.0 kg	O
RFX	Wireless charger for mobile phones - Fiat original part	£ 430	0.0 kg	O
365	TPMS tyre pressure checking system	£ 230	0.5 kg	O
2823206	Cab door with double glazing	£ 380	6.0 kg	O
JKU	230 V socket in driver's cab, Fiat original part	£ 290	0.1 kg	O

ECOVIP MOTORHOMES ACCESSORIES

Code No.	Accessories	Price £*	Kg	H 2109
INTERIOR ACCESSORIES				
FM2	Isofix fasteners (2 pieces)	£ 370	11.0 kg	O
2510177	Cabinets above the cab instead of drop-down bed	£ 1,310	0.0 kg	O
FC5	Bed conversion from single beds to double bed (with ladder)	£ 310	12.0 kg	O
3105529	Electric height adjustable rear bed	£ 1,420	25.0 kg	-
2843590	Seating group bed (single bed) and table with telescopic base	£ 320	10.0 kg	O
X8	Furniture design "Pero Toscano"	£ 0	0.0 kg	O
TT4	Upholstery Siena	£ 260	0.0 kg	O
EE	Upholstery Firenze, leatherette	£ 620	0.0 kg	O
TT2	Upholstery Udine, leatherette	£ 620	0.0 kg	O
TT5	Upholstery Milano, real leather	£ 2,640	0.0 kg	O
T07	Cushions Lazio	£ 380	0.0 kg	O
T04	Cushions Liguria	£ 380	0.0 kg	O
T16	Cushions Roma	£ 380	0.0 kg	O
T10	Cushions Trentino	£ 420	0.0 kg	O
T03	Cushions Umbria	£ 420	0.0 kg	O
T05	Cushions Veneto	£ 420	0.0 kg	O
T17	Cushions Siena	£ 380	0.0 kg	O
T19	Cushions Firenze, leatherette	£ 380	0.0 kg	O
T02	Cushions Sardegna, leatherette	£ 380	0.0 kg	O
T18	Cushions Milano, real leather	£ 660	0.0 kg	O
146	32" TV LED DVD, with decoder and adjustable TV stand	£ 1,310	7.0 kg	O
FM8	32" TV LED DVD, with decoder and adjustable TV stand at rear area	£ 1,310	7.0 kg	-
FD1	Adjustable TV stand	£ 160	3.0 kg	O
D42	Combi Diesel Heating (only in conjunction with. Diesel heating, art. 52X only for Kosmo Campervans, standard for Ecovip Campervans)	£ 620	1.0 kg	O
2471995	Heating Combi 6 E	£ 500	3.0 kg	O
ALD2	Hot water heating system (incl. motor heat exchanger)	£ 3,760	47.0 kg	O
FL3	Heating (Diesel auxiliary heating) 2000S	£ 1,900	17.5 kg	O
FH6	Combi Diesel E heater (only in conjunction with Diesel heater device, Art. 52X)	£ 900	5.0 kg	O
F58	Remote control of the heating via smartphone ⁽⁶⁾	£ 450	1.0 kg	O
2333651	Table with folding top and telescopic leg (bed in lounge not possible)	£ 270	10.0 kg	O
F07	Gas oven (installation above the fridge)	£ 590	20.0 kg	-
F02	Kitchen version Grand Chef, 3-burner stove, integrated gas oven with grill	£ 820	8.0 kg	-
2799662	Microwave oven (only possible in combination with the "Grand Chef" kitchen version)	£ 420	2.5 kg	-
FL5	Preparation for a second living area battery	£ 100	0.5 kg	O
FL4	Additional battery charger 20 A	£ 250	1.0 kg	O
FR6	Inverter 350W	£ 230	1.7 kg	O
FL2	Gas detection system	£ 210	2.0 kg	O

ECOVIP MOTORHOMES ACCESSORIES

Code No.	Accessories	Price £ *	Kg	H 2109
EXTERIOR ACCESSORIES				
2059062	Electric roof fan in kitchen	£ 230	2.0 kg	O
2390009	Electric roof fan in shower	£ 230	2.0 kg	O
2160664	External shower (hot and cold water)	£ 210	2.0 kg	O
3259855	Tow hitch	£ 1,580	78.0 kg	O
3076985	Gas regulator with automatic switchover (DuoControl) Series: MonoControl	£ 230	0.5 kg	O
3076983	Gas regulator with automatic switchover + defrosting device and remote control (DuoControl + EisEx) Series: MonoControl	£ 320	1.5 kg	O
F44	External Gas socket	£ 220	1.0 kg	O
37831	Laika foldable bicycle carrier for 3 bikes	£ 370	9.3 kg	O
37832	Bicycle rail for 4th bicycle	£ 90	1.0 kg	O
3231890	Awning Laika, 4 m, white housing	£ 920	36.5 kg	O
2065671	Awning Laika, 4.5 m, white housing	£ 960	41.5 kg	-
AN3	Satellite aerial 80 HD	£ 2,180	17.0 kg	O
FL6	120 W Solar panel with control and fixing brackets	£ 770	15.5 kg	O
FN3	Additional fresh water tank 67l, for summer operation	£ 270	15.0 kg	O
2851533	Stabilising jacks	£ 430	7.5 kg	O
2818306	2200 W Air conditioning in living room	£ 2,250	34.0 kg	O

H 3109	H 3110	H 3119	H 3512 DS	H 4109	H 4109 DS	H 4112	H 4112 DS
O	O	O	O	O	O	O	O
O	O	O	O	O	O	O	O
O	O	O	O	O	O	O	O
O	O	O	O	O	O	O	O
O	O	O	O	O	O	O	O
O	O	O	O	O	O	O	O
O	O	O	O	O	O	O	O
O	O	O	O	O	O	O	O
O	O	O	O	O	O	O	O
O	O	O	O	O	O	O	O
-	-	-	-	-	-	-	-
O	O	O	O	O	O	O	O
O	O	O	O	O	O	O	O
O	O	O	O	O	O	O	O
O	O	O	O	O	O	O	O
O	O	O	O	O	O	O	O
O	O	O	O	O	O	O	O
O	O	O	O	O	O	O	O



LOW-PROFILES



KREOS

KREOS LOW-PROFILES EQUIPMENT

CHASSIS

- Fiat Ducato Heavy, 140 BHP, Turbo Diesel Common Rail
- AL-KO AMC chassis with reinforced suspensions
- Enlarged rear track
- Fix & Go Tyre repair set
- 90 l diesel tank
- Electronic Stability Control: ESC, ABS, ASR, Hill Holder, Roll Over Mitigation, Crosswind Assist, Trailer Stability Control System, Post Collision Braking System
- Cruise control
- Eco-Pack with Start&Stop
- Manual air conditioning for cab
- Driver and passenger airbags
- Height adjustable steering wheel
- Electric windows in cab
- Bodywork and bumpers painted in same colour

CAB

- Central locking of cab and living area doors with remote control
- Height-adjustable swivel cab seats with armrests, backrests and fabrics matched to the living area

BODYWORK

- Insulation in extruded polystyrene foam (XPS)
- Outside and inside 44 mm thick aluminium side and rear walls
- Wood-free body with fibreglass roof and under floor
- Direct wall / roof connection with rounding and anti-torsion internal profile
- Upper profile with rainwater gutter function
- Floor / side panel junction with aluminum beam and interruption of the thermal bridge
- 44-mm service doors with thermal break
- Aluminium external walls
- Polyurethane wall and roof framework
- Fibreglass roof
- Continuous GRP front with heated and insulated living area / driver's cab connection
- Cab with integrated Skyview
- One-piece GRP rear wall with LED light clusters

- Heated and illuminated double floor, with heat storage function, accessible from outside and inside the vehicle, technical systems and storage compartments
- Hinged interior access hatches to double floor storage compartments
- Reinforced galvanised steel frame
- GRP sub-floor
- Aluminium side skirts
- Garage with low floor, non-slip coating, lighting, heating and rails with load hooks that can be repositioned
- Garage with maximum payload 250 kg depending on configuration and actual load in use
- Power socket in the garage
- Garage with double external access door, with gas pistons and double latching locks and centralised control
- Garage floor with water drain and central reinforcement in non-slip aluminium
- Garage with light switches on both sides
- Open garage doors sensors
- Entrance with integrated step
- Entrance with electrical step
- Electric step sensor with dashboard control
- Courtesy handle in the entrance area
- Premium XL living space door with three point closure with remote control, window, blind and sliding mosquito net
- Living area door with gas shock absorber
- Windows with frame, flat window pane, blind and mosquito net
- External LED light
- Gas cylinder compartment in a lowered position

KITCHEN

- Indirect lighting under kitchen top
- Corian double sink
- Multifunctional sink cover (chopping board)
- 3-burner stove
- Gas oven
- Refrigerator with automatic energy source selection (AES)
- Automatic soft-close drawers
- 230 V outlet in kitchen
- Kitchen and living room window frame covering
- 40x40 cm roof-light with thermostatically controlled electric fan in the kitchen

BATHROOM/SHOWER

- Removable toilet cassette (antifreeze)
- Roof-light in bathroom
- Bathroom door also to be used as a separation for the centre of the vehicle
- Separate Wellness shower with rain function and adjustable second spray head
- Sliding rear doors
- Mirrored bathroom wall units
- 230 V outlet in bathroom

SYSTEMS

- 100% LED lighting over and under wall units
- Indirect, dimmerable lighting
- Lighting with multiple controls
- Adjustable reading lights complete with USB sockets
- Night-time Lighting
- Heating with convectors, gas and electric, positioned in every room, including double-floor, garage and driver's cab
- Heating with programmable digital control panel
- Thermostat for independent rear bedroom heating control
- Heated double floor
- Digital control panel with colour display
- Automatic 20 A battery charger
- Compartment for two service batteries
- USB sockets for power supply and charging of mobile devices
- Gas compartment for two cylinders
- Heated water tank inside the double-floor - easily accessible for cleaning and inspection
- Pressure water pump with expansion tank in protected and heated room accessible from the rear garage
- Water pump 12 l/min capacity
- Heated waste water tank inside the double-floor - easily accessible for cleaning and inspection
- Exhaust pipes with anti-odour siphons, recovery tank complete with external vent

INTERIOR & COMFORT

- Single living area level flooring without stairs to rear bedroom
- Insulated/upholstered ceiling
- Insulated/upholstered walls
- “Natural Walnut” real wood furniture
- Anti-condensation walls and ventilation in the furniture for an ideal spread of the heat
- Height-adjustable living room headrests
- Ergonomic living room cushions with removable covers, seats, backrests and decoration cushions that can be arranged as desired
- “Parma” upholstery
- “Venezia” backrests
- Ergonomic table with moving top and easy handling.
- Maxi panoramic roof-light above the lounge
- Maxi panoramic roof-light above rear sleeping area
- Opening Skyview
- Back beds with extremely comfortable spring system
- Lifting headboard
- Ultra thick back “Wellness” anti-bacterial, anti-mite, breathable mattresses with machine washable stretch lining with silver ions
- Design rear headboard
- Wardrobes with integrated lighting, to be switched on independently
- Shoe compartment in the entrance area
- Storage space in the seating area with access to the double floor

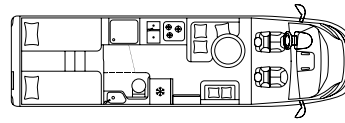
STANDARD SETTINGS FOR:

- TV preparation with power supply and aerial cable
- TV preparation in rear area
- Set-up for coupling
- Set-up for satellite aerial
- Internal wall unit-roof wiring passage
- Setting for additional clean water tank with level reading
- Setting for rear parking sensors
- Provision for radio
- Setting for living space speakers



KREOS 5000 LOW-PROFILES

OVERVIEW OF ALL MODELS



MODELS

L 5009

Standard chassis		Fiat Ducato 43 Heavy
Engine displacement / maximum power	cc / kW (hp)	2184 / 103 (140)
External length / width / height ^D	cm	799 / 230 / 299
Internal width / height	cm	218 / 200
Wheelbase	mm	4.500
Mass in running order ^F	kg	ND
Technically permissible maximum laden mass	kg	4.500
Technically permissible maximum towable mass ^{E, J}	kg	2.000
Type-approved seats / Berths ^A		4 (S) / 2 (S) + 2 (O)
Wall / roof / double floor (thickness)	mm	44 / 44 / 42+20
Double floor height (max / min)	mm	250
Windows		5 (S)
70 x 50 cm roof-light in sleeping area		S
Electric opening roof-light in living area	cm	112x74 (O)
Garage dimensions (W x H x L)	cm	218x129x124,8
Right hatch / left hatch (W x H)	cm	100x120 / 100x120
Maximum fresh water tank capacity depending on configuration and actual load	l	210
Maximum waste water tank capacity depending on configuration and actual load	l	150
Swivel toilet with removable tank (antifreeze)	l	18
Rear right side bed / rear left side bed	cm	200x80 / 200x80
Electric-powered drop-down bed ^{opt I}	cm	190x140
Refrigerator	l	153
Water heating system and heat exchanger in motion	kW	6 kW
12 V sockets - 230 V sockets - USB socket - TV sockets in living room - rear bedroom		3 - 6 - 6 - 3
Gas cylinder compartment	kg	2x11 kg



KREOS

KREOS 5000 LOW-PROFILES PACKS

PACK SUPER CHASSIS KREOS **P1K** **+ 7,4 KG**

- Electric and heated door mirrors
- Steering wheel radio controls
- DAB radio antenna
- DAB car radio and speaker arrangement in cab
- Traction+, Hill Descent
- Glossy black engine grille
- Leather-covered steering wheel and gear knob, original Fiat
- Headlights with black design surround
- Dashboard in „Techno Trim“ version
- Automatic cab air conditioning, Fiat original part
- 16“ Alloy wheels Fiat original parts, Heavy chassis (4 pieces)

PACK SUPER LIVING KREOS **P2K** **+ 95,6 KG**

- Garage upgrade with needle felt, anchorage systems, multi-way lighting
- Winebox in garage with dedicated lighting
- Truma DuoControl CS with EisEx
- Kitchen top, table, toilet and architectural elements in Corian
- Designer mixer taps for bathroom and kitchen
- Shower platform
- Electric recovery tank drain valve
- Alde heat exchanger
- Pull-out storage and wardrobe systems
- Internal sliding blinds, for windshield and cab windows (they replace the standard separation curtain between cab/living area)
- Laika logo stickers for Fiat wheel covers or alloy wheels (4 pieces)

PACK SUMMER PLUS KREOS **SP8** **+ 118,2 KG**

- Truma Saphir Comfort air conditioning system in the double floor with ducts in cockpit
- DeepBlack roof enclosure, manual, 4.9 metres
- LED light integrated in roof enclosure
- Solar panels, 2x120W with charge regulator
- Outdoor shower in garage
- 350W inverter
- Second cell battery set-up

PACK TV PLUS KREOS **FD4** **+ 36,3 KG**

- Oyster Twin HD satellite antenna
- Retractable electric TV stand for lounge TV
- 32“ LED TV with DVD
- 22“ LED TV with DVD and TV stand for bedroom

**PACK TV
KREOS**

**FD3
+ 28,3 KG**

- Oyster Twin HD satellite antenna
- Retractable electric TV stand for lounge TV
- 32" LED TV with DVD

**DRIVING ASSISTANCE
SYSTEMS PACK**

**PS7
+ 2 KG**

- Autonomous Emergency Brake Control with Pedestrian and Cyclist detection, Lane Control (Lane Support System), Rain and Dusk Sensor, Traffic Sign Recognition + High Beam Recognition

**ALARM
PACK**

**S1A
+ 4.2 KG**

- Front parking sensors (4 pcs.)
- Rear parking sensors (4 pcs.)
- Volumetric-perimeter anti-theft device (incl. garage doors and hatches), remote control integrated in engine key
- Anti-theft sensors for windows (6 pieces)

**MULTIMEDIA PACK
ECOVIP + KREOS**

**MZ1
+ 7,8 KG**

- Multimedia System 9", Autoradio DAB, Touchscreen, Navigatore e aggiornamento mappe 3 anni, altoparlanti, retrocamera

KREOS 5000 LOW-PROFILES ACCESSORIES

Codice Accessori Prezzo €* Peso L 5009

CHASSIS AND CAB

3056220	Fiat 2.2 Engine, 160 BHP, Euro 6d Final (Extra charge compared to 140 BHP)	£ 1,990	15.0 kg	O
3056222	Fiat 2.2 Engine, 180 BHP, Euro 6d Final (Extra charge compared to 140 BHP)	£ 3,620	15.0 kg	O
AT9-HE140	140 BHP Automatic gearbox for Heavy Chassis	£ 3,020	18.0 kg	O
AT9H160180	160 BHP and 180BHP Automatic gearbox for Heavy Chassis	£ 3,020	3.0 kg	O
2PZ	U-Connect 10" Radio NAV Touch HD Display Fiat original part	£ 1,750	1.9 kg	O
2QF	Full-Digital Cluster - Fiat Fiat original part	£ 480	0.3 kg	O
5QD	Engine battery cut off switch, Fiat original part	£ 170	0.0 kg	O
LPZ	Fog lights with cornering function, Fiat original part	£ 260	2.0 kg	O
9WE	Full LED headlights, Fiat original part	£ 1,590	0.0 kg	O
205	Programmable Diesel heating, Fiat original part	£ 1,060	6.0 kg	O
09U	Heated cab seats, Fiat original part (2 pieces - only in combination with Udine and Firenze upholstery)	£ 650	1.0 kg	O
RFX	Wireless charger for mobile phones - Fiat original part	£ 430	0.0 kg	O
75J	Fiat AL-KO TPMS Tyre Pressure Monitoring System	£ 330	0.5 kg	O
2354026	ACS Reinforced comfort front suspensions, Fiat Heavy Chassis	£ 1,010	0.2 kg	O
2112799	2 x Air Premium Rear Suspension	£ 3,220	45.0 kg	O
JKU	230 V socket in driver's cab, Fiat original part	£ 290	0.1 kg	O

INTERIOR ACCESSORIES

FF2	Isofix fasteners (2 pieces)	£ 260	4.0 kg	O
F04	Electric drop-down bed above the lounge ⁽³⁾	£ 1,420	40.0 kg	O
FC5	Bed conversion from single beds to double bed	£ 310	12.0 kg	O
TT4	Upholstery Siena	£ 260	0.0 kg	O
EE	Upholstery Firenze, leatherette	£ 620	0.0 kg	O
TT2	Upholstery Udine, leatherette	£ 620	0.0 kg	O
TT5	Upholstery Milano, real leather	£ 2,640	0.0 kg	O
T14	Cushions Modena	£ 420	0.0 kg	O

Codice	Accessori	Prezzo €*	Peso	L 5009
T11	Cushions Napoli	£ 380	0.0 kg	O
T12	Cushions Pisa	£ 380	0.0 kg	O
T15	Cushions Rimini	£ 380	0.0 kg	O
T19	Cushions Firenze, leatherette	£ 380	0.0 kg	O
T02	Cushions Sardegna, leatherette	£ 380	0.0 kg	O
T18	Cushions Milano, real leather	£ 660	0.0 kg	O
FL3	Heating (Diesel auxiliary heating) 2000S	£ 1,900	17.5 kg	O
FP1	Kitchen version Grand Chef, 3-burner stove, integrated gas oven with grill - Kreos ⁽¹⁾	£ 820	5.0 kg	O
FP2	Dishwasher ⁽²⁾	£ 1,180	20.0 kg	O
2799662	Microwave oven (only possible in combination with the "Grand Chef" kitchen version)	£ 420	2.5 kg	O
FQ4	Coffee machine with connection set with stand and capsule holder	ND	ND	O
FL5	Preparation for a second living area battery	£ 100	0.5 kg	O
FL4	Additional battery charger 20 A	£ 250	1.0 kg	O
FR6	Inverter 350W	£ 230	1.7 kg	O
FL2	Gas detection system	£ 210	2.0 kg	O

EXTERIOR ACCESSORIES

FP5	Electric roof fan in bathroom	£ 230	2.0 kg	O
2390009	Electric roof fan in shower	£ 230	2.0 kg	O
FQ7	Electric panorama sliding roof window above the living area ⁽¹³⁾	£ 1,550	5.0 kg	O
FP8	Tow hitch	£ 1,500	36.0 kg	O
F44	External Gas socket	£ 220	1.0 kg	O
FQ2	Gas filter for gas regulator	£ 230	1.0 kg	O
FP9	Extendable bicycle carrier for the garage	£ 650	9.9 kg	O
FP7	Awning Laika, 4.9 m, anthracite housing	£ 1,120	45.0 kg	O

MOTORHOMES INFORMATION

Technical data sheets notes

- (A) If accessories are installed, the number of the type-approved seats may change.
- (B) With chassis Fiat 43 (only with wheelbase 3,450, 3,800 and 4,035 mm) and chassis 160 or 180 HP, the maximum possible mass is 4,400 kg.
- (D) Accessories mounted on the roof, for example satellite aerial, solar panel, etc., modify the height of the vehicle.
- (E) By mounting the tow hitch the weight in running order changes, so it is possible that the type-approved seats may change.
- (F) The mass in running order includes: Driver 75 kg, fuel and fresh water tanks (20 l) 90% full, 90% gas and electric cables, standard basic version. Slight differences are possible within the tolerances of the materials used and the production processes. Masses and approved seats vary according to engine, variants and accessories.
- (H) By mounting the tow hitch the weight in running order changes, so it is possible that the type-approved seats may change. Towable mass for climbs not exceeding 12%.
- (I) With the pull-down bed over living area, the 50x70 cm roof-light will be replaced with a 40x40 cm roof-light
- (J) The towable mass and the maximum total weight must not exceed 6,000 kg.
- (L) Not compatible with pull-down bed
- (M) Not compatible with pop-up roof
- (N) WC with fixed bowl and removal tank (anti-freeze) for Ecovip L 2009 and H 2109

Accessories notes

- (1) In case this accessory is installed, the standard cab sun visors will have to be removed, as they are technically incompatible.
- (3) Allows to turn on / off the heating system via Bluetooth or GSM (SIM). The dedicated SIM is not provided by Laika.
- (4) With the "Grand Chef" kitchen, the standard gas oven above the fridge will no longer be available.
- (5) With the drop-down bed over the living room, the roof-light 70x50 cm is replaced by the roof-light 40x40 cm.
- (6) In case this accessory is installed, the headrests in the living room must be replaced with differently shaped headrests and having height adjustment in one position only.
- (8) Blind not available for Kosmo 209.

Accessories notes

! Installing accessories reduces the load capacity

If accessories are installed, it is mandatory to follow the instructions and recommendations indicated by the manufacturer of the accessory installed.

Technical information

- 1) The weights of the vehicles in running order (reg. EU 1230/2012) include: 75 kg driver, 90% of fuel tank capacity, gas cylinder capacity, capacity of tank for fresh water considered suitable for running.
- 2) Anything not included in the standard vehicle version (whether referring to mechanics or to the living space) can cause an increase in weight in running order with a resulting reduction of the useful load. This reduction may result in the need to reduce the number of approved seats, if the total weight of Accessories and options exceeds the value of the residual useful load. It is therefore advisable to consult the weights of individual options and Accessories listed in the price list before installing any Accessories. Please remember that the law does not permit exceeding the technically permissible maximum mass value. It is therefore advisable not to exceed the Technically Permissible Maximum Mass and that sufficient useful load remains for passengers and luggage. In the event of installation of a bike rack or of declassing of the Heavy chassis, the approved seating number may vary. In this case, always check with the dealer regarding any changes to approved seats.
- 3) The calculation of useful load is given by the difference between the Technically Permissible Maximum Mass at full load and the Mass in Running Order. This figure includes 75 kg for each passenger (not including the driver), and the minimum useful load (given by the formula 10 kg for each metre of length of the vehicle plus 10 kg for each passenger, usable by the crew for luggage and equipment), which will be separated to obtain the residual useful load. The residual useful load can be used for the installation of Accessories and for loading more luggage.
- 4) In order to maintain optimal setup of the vehicle in running and stationary conditions, it is advisable to distribute the payload in a uniform manner over the surface of the vehicle.
- 5) The technical specifications indicated on this sheet regarding the measurements and weights of the vehicles as well as their supplied equipment and appearance correspond to the current knowledge at the time of printing (August 2021). The technical specifications can, however, vary, with a tolerance of +/- 5%.
- 6) The data regarding towable mass are a valid indication for upward slopes with a maximum incline of 12%.
- 7) Laika reserves the right to make changes to equipment or improvements to products. Before making your purchase official, we

recommend that you inquire with your preferred Laika dealer for the latest update regarding standard provided equipment and to verify whether any changes have been made with respect to the specifications contained in this sheet.

- 8) Parts in contact with one another may display different shades of colour due to differences amongst the materials used.
- 9) The overall vehicle height is increased in case of installation of Accessories on the roof, such as – for example - satellite antennas and solar panels .
- 10) The number of approved seats can vary depending on the regulations of the individual states regarding road travel.
- 11) Installed, transformed, or added Accessories that have not been approved by Laika can compromise or reduce safety margins and cause damage, even if there is notification proving the possibility of installation of an accessory.
- 12) Please note that, in case of installation of an accessory - especially in the back area, like for example of bike racks, tow hitch, and so on - you must always be sure you observe the maximum load permitted on the axle.
- 13) Any changes made after production can reduce vehicle safety margins.
- 14) Please make sure, referring to the weights of individual Accessories listed in the price list or asking your authorised Laika dealer, that the overall permitted mass is not exceeded and that sufficient useful load remains for passengers and luggage.

General information

Laika Caravans S.p.A. reserves the right, at any time and with no notice, to improve and change the specifications of the cell and frames, furniture and interior design characteristics and the equipment of the vehicles presented in this catalogue. In spite of our careful control, this catalogue may contain misprints. Some of the vehicles shown in the pictures of this catalogue are prototypes not yet serially manufactured at the printing date of this catalogue (August 2021). Some of the vehicles shown in the pictures have Accessories not included in the standard equipment, which therefore can be supplied only at an extra price. The pictures may even show pieces of furniture (e.g. plates, glasses) and other objects, such as TV sets or motorbikes, that are not included in the standard equipment of the vehicles and not marketed by Laika. This catalogue contains the standard equipment and specification characteristics supplied at the print date. The data in the technical data sheets refer to the European type approval, which is valid in all EU Countries. Some data might differ in non-EU Countries due to different applicable regulations. In this case, we recommend contacting the nearest Laika dealer for information concerning local registration laws and the related type-approval data. Your dealer will inform you about any change made to the products after printing the catalogues. All the Options are available at an extra price. For any particular or special use the Customer should inform the dealer before signing the purchase contract. If accessories are installed, it is mandatory to follow the instructions and recommendations indicated by the manufacturer of the accessory installed.

Price Note

The prices shown in this price list are expressed in GBP and include the transportation cost to the Retailer and 20% VAT. Laika Caravans S.p.A. reserves the right to, and does alter from time to time, technical specifications, prices and model ranges as materials, model improvements and conditions require. This price list does not constitute an offer by Laika Caravans S.p.A. and should be used for guidance purposes only. Please confirm full specification and pricing with your approved Laika Retailer before placing your order. This price list supersedes any previous versions.

Laika Caravans S.p. A.
Via Certaldese 41/A
San Casciano in Val di Pesa
50026 Firenze, Italia

Telefono: +39 055 805 81
Fax: +39 055 805 85 00

laika@laika.it
www.laika.it

Facebook: LaikaCaravan
Instagram: laika_Caravans

Enjoy the Dolce Vita.

